



AGRICULTURE CLUSTER DEVELOPMENT PROJECT



STATUS REPORT



JUNE 2021

Compiled by Milly Mbuliro - GIS Specialist
Amelia Atukunda - M&E Specialist
Chris Gumisiriza - Grants Manager
Janet Cox Achora - Communication Specialist
Allan Guma - Rice Commodity Officer

Design & Layout Vivek Bahukhandi (bahukhandi@gmail.com)

Copyright ©Agriculture Cluster Development Project, May 2021

CONTENTS



Message from Project Coordinator	2
Project Summary	4
Specific Objectives.....	4
Implementation Arrangements.....	4
Financial Performance	5
Introduction	7
Geographical Scope.....	8
Component 1 - Support for Intensification of On-Farm Production.....	9
Objective.....	9
Project Beneficiaries.....	9
The E-Voucher Process.....	9
Value of Agro Inputs.....	10
Provision of Extension Services.....	11
Formation and Strengthening of Farmer Organizations	12
Development of Agro Input Market.....	17
SUCCESS STORIES.....	14 /27
Component 2 - Value Addition and Market Access.....	20
Objective.....	20
Agribusiness Skills Development	21
Improving Capacities Of Farmer Groups.....	21
Post Harvest Handling & Market Access	22
Location of Matching Grants	24
Elimination of Bottlenecks on Community Access Roads	30
Component 3 - Policy, Regulatory And Institutional Support.....	32
Objective.....	32
Agricultural Water Management Investments.....	33
Component 4 - Coordination and Management, and ICT Platform.....	38
Lesson Learnt.....	41
Annex 1.....	43
Annex 2	44
Annex 3	55
Annex 4.....	56

MESSAGE FROM PROJECT COORDINATOR



Dear Esteemed Reader,

In line with MAAIF Mission to transform subsistence farming to commercial agriculture, ACDP is one of the Ministry projects contributing to the achievement of a profitable, competitive and sustainable agriculture in Uganda. The Agriculture Cluster Development Project, is a government project being implemented by MAAIF with 150-million-dollar credit facility from the IDA of the World Bank. This is supplemented by up to 98-million-dollar contribution from farmers and farmer organizations participating in the project.

The Project Development Objective is to raise on-farm productivity, production, and marketable volumes of maize, rice, beans, cassava and coffee in 57 districts across all regions of Uganda. Through the e-voucher scheme, the project provides subsidised productivity enhancing inputs as a way of demonstrating the value and enhance adoption of quality agro-inputs. To preserve the quality of the increased produce, matching grants are provided to farmer organization to acquire postharvest handling and value addition facilities. Production areas to storage/value addition. Districts are also supported to eliminate choke points that impede the flow of farm inputs and produce from production areas to storage/value addition and markets.

The purpose of this document is to give an update on the progress and status of implementation of the ACDP.

Ever since the project was declared effective in February 2017, the Ministry has hosted seven World Bank Implementation Support and Review Missions. The project performance was rated as Satisfactory during the 7th Mission which took place in May 2021. Remarkable progress has been made in all major project components of the project. including access to Agro-inputs, award and implementation of matching grants, civil works on farm access road chokes and strengthening of MAAIF's policy, regulatory and agricultural statistics functions. In terms of financial performance, the project has achieved a steady increase in the disbursement rate of 74% as of May, 2021. This disbursement trend is attributed to the physical performances made in major project areas including the disbursement of funds to the 270 matching grant beneficiaries and payment to contractors for road chokes in the 7 pilot districts.

Implementation of ACDP with the full participation of the farmers and the private sector has demonstrated that the mission of transforming farmers from subsistence to commercial agriculture is possible. Farmers/farmer organisation deal directly with genuine agro-input distributors and machinery distributors which has

limited involvement of middlemen thus reducing the cost of transactions. Due to the traceability mechanism inbuilt in the e-voucher systems, the quality of inputs delivered under the project in particular has greatly improved. The requirement for farmers to co-fund is gradually instilling the ownership attitude and as such improving the management and handling of inputs delivered. The farmers now have the power to reject poor quality inputs and even demand for compensation from suppliers. The project through the co-funding/matching grants is stimulating local savings among the beneficiary farmers for investment in agriculture commodity value chains as well support post-harvest and value addition community initiatives. The infrastructure and machines being acquired are not likely to become white elephants during and after the project as they are farmer owned.

The ACDP model is very appropriate and well aligned to spur the agro-industrialisation agenda as espoused in the NDP III. Therefore, upscaling ACDP to the rest of the country and other strategic enterprises as proposed by the 10th Parliament, would go a long way in enhancing the incomes and improving the quality of life of the smallholder farmers.

On behalf of the project implementation team, I acknowledge the positive collaboration of other stakeholders in implementing ACDP – World Bank, MoFPED, MoLG, MoTIC, NITA-U, NIRA, DLGs as well as the private sector players - UBA, Agro-input dealers, equipment suppliers, Enterprise Uganda, Uganda Cooperative Alliance among many. Special appreciation goes to the Farmers and Farmer Organisations who apply, co-fund and receive inputs and grants in the project - the most crucial elements in the success of this project.

Dr. Henry Nakelet Opolot
Project Coordinator – ACDP
Commissioner Agricultural Extension and Skills Management,
MAAIF



PROJECT SUMMARY



BASIC DATA

Project ID & Name	P145037 – Agriculture Cluster development project
Approval Date	April 9, 2015
Parliamentary approval	September 15, 2016
Financing Agreement signing	September 26, 2016
1st Restructuring (Tier 2)	November 21, 2016
Effectiveness declaration	January 23, 2017
2nd Restructuring (Tier 2)	May 29, 2018
Current Closing Date	March 31, 2022
Loan amount (USD, million)	150

The Project Development Objective (PDO) is to raise on-farm productivity, production, and marketable volumes of maize, beans, rice, cassava and coffee, in specified (12) geographic clusters 57 districts.



SPECIFIC OBJECTIVES

1. Support intensification of on-farm production of the five commodities.
2. Support improvement of postharvest handling and marketing of farm produce and rehabilitation of farm access road chokes.
3. Support strengthening of MAAIF policy and regulatory functions.
4. Support coordination, monitoring & evaluation and, development of ICT platforms.

IMPLEMENTATION ARRANGEMENTS

Project management is by the Project Coordination Unit (PCU) headed by a Project Coordinator and deputized by a Deputy Project Coordinator. Policy guidance is provided by an inter-ministerial Project Steering Committee with technical guidance provided by a Project Technical Committee at the Ministry. A Cluster Multistakeholder Platform (Committee) oversees activities at cluster level while a District Coordination Team with a Project Focal Person, implements the project at District level.

The Ministry Departments are responsible for the different project components & sub components namely:

Department of Crop Production – **Component 1**

Department of Agricultural Extension and Skills Management - **Subcomponent 1.2**

Department of Agricultural Investment and Enterprise Development – **Component 2**

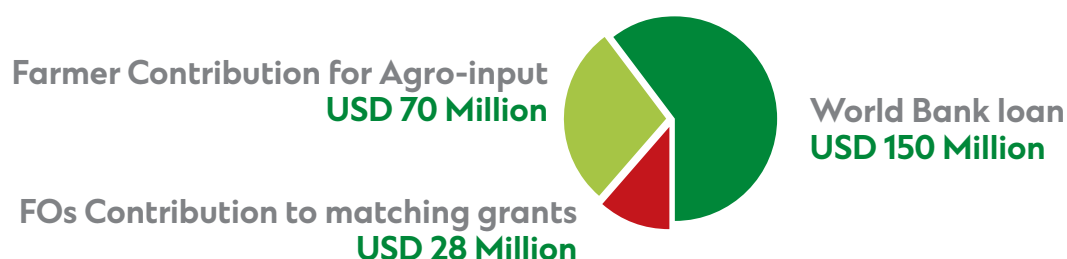
Department of Agricultural Infrastructure, Mechanization and Water for Agricultural Production – **Subcomponent 2.3 and 3.2**

Department of Crop Inspection and Certification – **Subcomponent 3.1**

Department of Crop Protection – **Subcomponent 3.4**

Department of Agricultural Planning & Development – **Component 4 and Subcomponent 3.3**

TOTAL PROJECT COST: USD 248 MILLION



FINANCIAL PERFORMANCE

FUNDING SOURCE					
Funding source	Loan (USD)	Cumulative Disbursed (USD '000)	Cumulative Expenditure (USD '000)	Balance unspent on Disbursed (USD '000)	Balance Undisbursed (USD '000)
IDA	150,000,000	111,345 (74%)	75,500 (50%)	35,845	38,655 (26%)

The project financial performance has kept improving steadily following take-off of major interventions like matching grants and rehabilitation of road chokes. The project work plan for the FY 2020/21 was budgeted at UGX 296.26 billion, with a quarterly budget of UGX 85.8 billion, UGX 64.5 billion, UGX 87.5 billion and UGX 58.6 billion for first, second, third and fourth quarters respectively.

COMPONENTS				
Components	Revised Overall Budget (USD)	Cumulative Expenditure as at 20th April 2021	Variance	Performance
Support for Intensification of On-farm production	71,146,100	34,152,748	36,993,352	48%
Value Addition and Market Access.	48,528,106	19,944,640	28,583,466	41%
Policy, Regulatory and Institutional Support	15,018,085	6,481,682	8,536,403	43%
Coordination and teams Management, and ICT Platforms	15,307,709	8,158,430	7,149,279	53%
Total	150,000,000	68,737,520.65	81,262,479	46%

PHYSICAL PERFORMANCE

Provision of subsidised agro-inputs (seeds, fertilizer, pesticides, farm equipment / materials and mechanization services) through the e-Voucher Program

Out of the targeted 450,000 households, 200,984 farmers (45%) contributed and received inputs. The cumulative value of inputs provided to farmers is UGX 82 billion of which UGX 54 billion is government contribution and UGX 27 billion is farmer contribution.

The average household yield (MT/Acre) for project beneficiaries increased by 30% for maize, 27% for rice, 19% for beans and 9% for coffee farmers compared to non-project beneficiaries at 1% for maize, 0% for rice, -8% for beans and 0% for coffee farmers

Provision of matching grants for acquisition of storage and value addition facilities

The Ministry has awarded matching grants to 362 Farmer Organizations from 57 districts. Project funds amounting to UGX 46 billion has been disbursed to 270 farmer organizations. A total of 167 stores established and 148 value addition equipment installed by 192 farmer organizations in 24 districts. Total storage capacity established is 42,714 MT. The value addition facilities installed include: 58 coffee hullers, 39 maize mills, 27 rice mills, 15 cassava mills and 7 bean seed sorters, 58 weighing scales, 64 moisture meters and 27 grain driers. Total value of the stores established and machinery installed is UGX 74 billion (Government contribution = 49.6 billion and FO contribution = 24.4 billion). An additional UGX 13 bn is being disbursed to 170 FOs that have signed agreements.

Rehabilitation of farm access road chokes

Rehabilitation works valued at UGX 13.2bn in the 5 pilot districts are at overall 80% physical progress. They are spread over a length of 254 KM including 1 bridge, 8 box culverts, 33 swamp fillings and several grading/gravelling sections. Procurement of works on 1,104 in 21 districts is in final stages, contracts expected to be signed by July 2021. Development of designs and bills of quantities (BoQs) for identified roads in 29 rollout districts is in final stages.

Investment plans for agricultural water management developed

To enable research all year round, seven (07) 5-acre solar powered irrigation systems valued at UGX 2.1bn are being established at 7 Zonal Agricultural Research and Development Institutes (ZARDIs). These include, Bulindi ZARDI in Hoima District; Kamenyamigo ZARDI in Lwengo district; Nabuin ZARDI Nabilatuk District; Abi ZARDI in Arua District; Buginyanya ZARDI in Mayuge District; Ngetta ZARDI in Lira District and Rwebitaba ZARDI in Kabarole District. Overall physical progress is estimated at 96%. 50 small-scale coffee irrigation schemes to be established in the 9 districts of Bukwo, Kassanda, Kikuube, Hoima, Kiryandongo, Kabarole, Kasese, Masindi and Bunyangabu at a total cost of UGX UGX 2 billion.

ACDP is a well-designed project aligned to the agro-industrialization agenda of Government by contributing to increased production and productivity, post-harvest handling, primary processing and market access among small-holder farmers. The project tangible deliverables are very visible on the ground.

UGX 82 BN

Cummulative value of inputs provided to farmer

362

Awarded matching grants to 362 Farmer Organizations from 57 districts

50

Small-scale coffee irrigation schemes to be established in the 9 districts at a total cost of UGX 2.7 billion.

INTRODUCTION



The Agriculture Cluster Development Project (ACDP) is financed by an International Development Association (IDA) credit (IDA Cr.No. 5611-UG) of USD 150 million that was approved by the Board on April 9, 2015. The Financing Agreement (FA) was signed on September 26, 2016 and became effective on January 23, 2017).

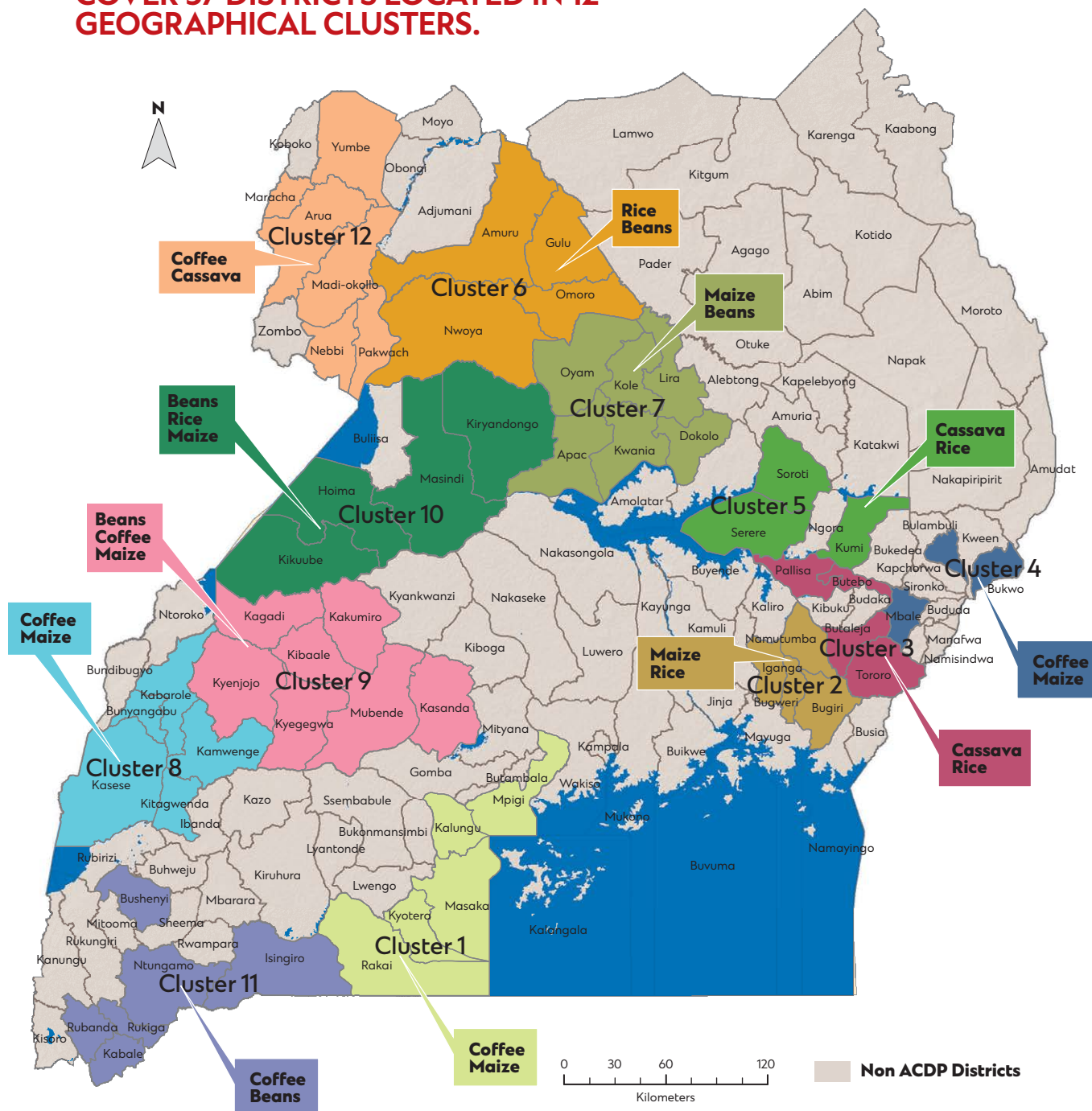
The project is composed of four component namely:

- Component 1:** Support for Intensification of On-Farm Production
- Component 2:** Value Addition and Market Access.
- Component 3:** Policy, Regulatory and Institutional Support
- Component 4:** Coordination and Management, and ICT Platform

The project objective is to raise on-farm production, productivity, and marketable volumes of Beans, Cassava, Coffee, Maize and Rice in 12 geographical clusters across 57 districts.



GEOGRAPHICAL SCOPE THE PROJECT INTERVENTIONS COVER 57 DISTRICTS LOCATED IN 12 GEOGRAPHICAL CLUSTERS.



The cumulative value of inputs provided to farmers is UGX 82 billion of which UGX 54 billion is government contribution and UGX 27 billion is farmer contribution.



¹The design was to cover 42 districts are now 57 due to subdivisions of some of the original project districts.

COMPONENT 1



SUPPORT FOR INTENSIFICATION OF ON-FARM PRODUCTION

OBJECTIVE

The objective of Component 1 is *to support intensification of on-farm production of five priority commodities namely, maize, cassava, beans, rice and coffee*. For eligible farm households, support under this component focuses on:

- i. e-Voucher Program (EVP);
- ii. Capacity Building for Target Beneficiaries and Farmer Organizations;
- iii. Development of Agricultural Input Markets

The EVP was piloted in the 5 pilot districts in November 2018, rolled out to 24 districts in 2019B and the remaining 32 districts in 2020A.

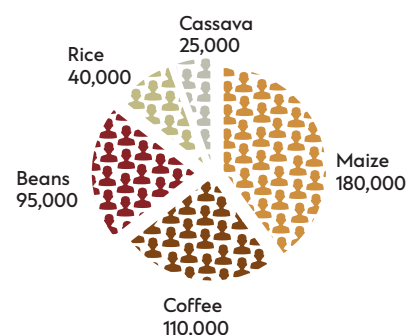
PROJECT BENEFICIARIES

450,000 farmers of which 180,000 maize, 110,000 coffee, 95,000 beans, 40,000 rice and 25,000 cassava aggregated into:

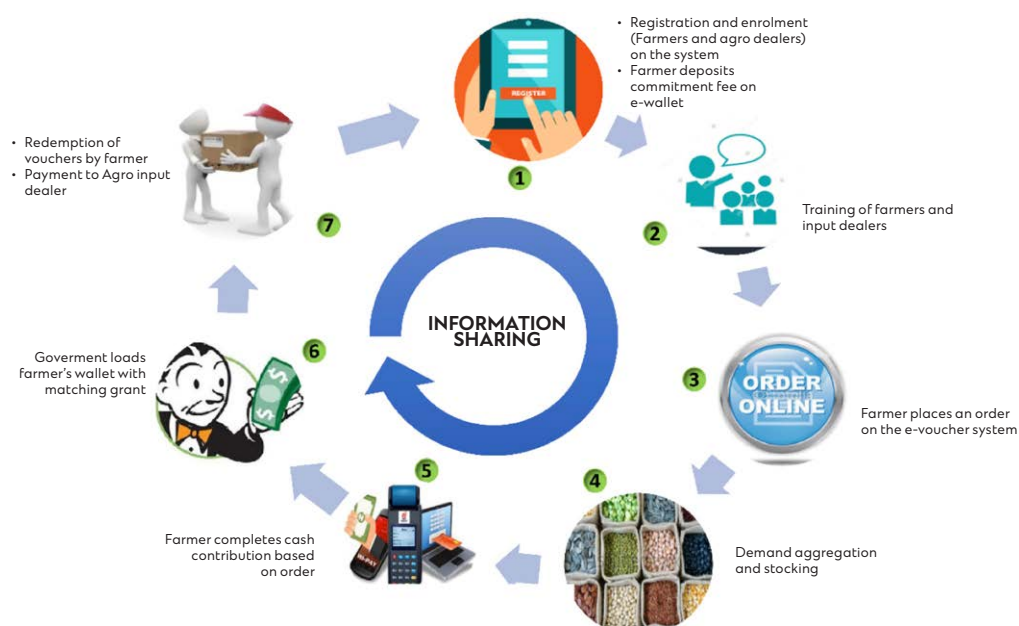
- 300 Area-based Commodity Cooperative Enterprises (ACCEs)
- 3,000 Rural Producer Organizations (RPOs)
- 30,000 Farmer Groups (FOs).

Out of the targeted 450,000 households, 416,518 farmers (92%) have enrolled to participate in the e-voucher subsidy program, of which 277,990 farmers (62%) ordered for inputs and of these 200,984 farmers (45%) contributed and received inputs.

Targeted Farmers



THE E-VOUCHER PROCESS



Key Performance Indicators

The subcomponent contributes to the following key performance indicators in the project results framework;

- i. Yields (MT/ha) of selected commodities (maize, rice, beans, cassava, and coffee) for the participating households
- ii. Increase (%) in maize, rice, beans, cassava, and coffee production by participating farms in the project areas
- iii. Increase (%) in maize, rice, beans, cassava, and coffee production in the project area (percentage)
- iv. Direct Project Beneficiaries
- v. Percentage of Female Beneficiaries
- vi. Area under improved technology (Seed, Fertilizers, Pesticides) as a result of project interventions – Hectares
- vii. Percentage of Farmers using improved agricultural technology (seed, fertilizer, pest protection, small scale irrigation equipment, etc) among the targeted beneficiaries
- viii. Number of participating farm households using post-harvest technology inputs as a result of the project intervention

VALUE OF AGRO INPUTS

One of the project intentions was to cause farmers to appreciate use of good quality inputs thus growing their investment in productivity enhancing inputs from UGX 50,000 per season to at least UGX 300,000 per season. To-date farmers have contributed UGX 27 billion and Government contributed UGX 54 billion bringing the total value of inputs to UGX 82 billion. The largest investment has been on fertilizers followed by tarpaulin, seed and herbicides.

TYPE AND VALUE OF INPUTS

Type of Input	Quantity	Farmers' Contribution (UGX)	Government Subsidy (UGX)	Total Cost (UGX)
Agrochemical Fumigants	3,568	1,76,64,150	3,58,55,850	5,35,20,000
Agrochemical Fungicide	1,030	1,01,06,220	2,04,87,780	3,05,94,000
Agrochemical Herbicides	3,10,683	1,76,78,16,440	3,57,77,07,160	5,34,55,23,600
Agrochemical Insecticides	73,093	88,78,62,135	1,79,73,27,365	2,68,51,89,500
Bean Seeds	18,51,115	3,43,05,07,161	6,95,83,93,406	10,38,89,00,549
Cassava Cuttings	27,922	28,51,42,408	57,67,83,392	86,19,25,800
Fertilizers	2,37,010	10,08,50,17,969	20,38,85,71,696	30,47,35,89,664
Hermetic bags	1,17,598	39,13,91,238	78,85,29,815	1,17,99,21,050
Maize Seeds	4,31,577	1,13,16,71,623	2,29,29,11,798	3,42,45,83,346
Pangas	67,138	14,01,85,283	28,23,85,247	42,25,56,500
Post-harvest Materials	10,423	9,55,49,848	19,31,75,043	28,87,24,250
Rice Seeds	32,150	5,25,22,600	10,61,47,400	15,86,70,000
Tarpaulins	2,41,346	8,78,25,18,149	17,77,43,19,522	26,55,68,37,570
Tractor Hire Services	1,407	4,64,99,000	9,42,01,000	14,07,00,000
Total	34,06,060	27,12,44,54,224	54,88,67,96,474	82,01,12,35,829



PROVISION OF EXTENSION SERVICES

To enhance increased demand for inputs, effective use of inputs, environment conservation and handling grievances, the project provides training and capacity building of farmers and other stakeholders. In order to have effective trainings, the project has developed, printed and disseminated Information, Education and Communication (IEC) materials including manuals and brochures. These cover topics on; e-Voucher System, Crop Production, Post-Harvest Handling, Farmer Institutional

Development (FID) and Grievance Redress Mechanism and Environment and Social Safeguards among others

Other topics covered include Sustainable Land use Management , land preparation weeding, soil analysis, selection of varieties, post-harvest handling, use of spray pumps, integrated pest management (IPM), integrated soil fertility management (ISFM), post-harvest handling, ethics in agricultural business, cost-benefit analysis among others.



A total of 382,000 farmers have been provided with training on input use and system use through the government extension system. The project has also mobilized and sensitized a total of 396,409 stakeholders.



FORMATION AND STRENGTHENING OF FARMER ORGANIZATIONS

NUMBER OF FARMER GROUPS TRAINED AND MEMBERSHIP PER CLUSTER						
District and Cluster	Number of farmer Groups			Total membership trained		
	Target	Trained	Progress (%)	Number	Number of Females	Female (%)
Cluster 1	3868	1387	36	27801	17854	64
Cluster 2	2801	1473	53	35361	20694	59
Cluster 3	1233	1128	91	24858	15737	63
Cluster 4	3867	1201	31	26323	15378	58
Cluster 5	399	285	71	6903	4576	66
Cluster 6	1534	762	50	14983	9040	60
Cluster 7	1834	1020	56	19598	12322	63
Cluster 8	3061	1580	52	31309	20637	66
Cluster 9	3918	2305	59	44818	29092	65
Cluster 10	2966	1571	53	34170	22202	65
Cluster 11	3800	1939	51	39285	25526	65
Cluster 12	1,068	706	59	15,290	10977	72
Grand total	30,349	15,357	51	320,699	204,035	63.9

The project has trained 15,357 farmer groups reaching 51% of the target groups. The groups trained have a membership of 204,035 farmers (64% females).



The trainings have resulted in the following benefits among the trained groups;



5,531

Newly registered groups (36% of the trained groups)

4,847

Groups without savings and credit scheme now have this scheme (32% of the trained groups)

511

Groups have resumed holding weekly meetings (4% of the trained groups)

2,532

Groups have acquired record books (16% of the trained groups)

754

Groups have developed business plans (6% of the trained groups)

4,887

Groups formerly without constitutions or with poor constitutions now have improved constitutions (32% of the trained groups)



MS. ANDERA ESTHER FROM APOKOR SOUTH WEST VILLAGE IN APOKOR PARISH IN TORORO DISTRICT

Ms. Andera Esther is a 57-year-old farmer in Tororo district. She is a chairperson of Apokor Development Forum group, a savings group. In 2020, she was one of the beneficiaries who after being sensitized about the ACDP program, went back and mobilized her group members to register with the project. By March 2020 she had managed to get 12 of her members interested and each paid Ushs 148,500 for the cassava package, she received her inputs in April 2020. The inputs included 8 bags of cassava cuttings, 1 tarpaulin and 5 hermetic bags. Esther was able to plant her cassava which has since grown. She says the project is quite good because now her family has enough food from cassava.

“This cassava is really good! It is sweet, soft and very high yielding. One plant can have over 10 tubers! I used the PHH material gotten under the project to dry and store food items including cassava, maize and beans” said Esther excitedly.

This has enabled her family to have properly stored and good quality food. She has also been able to sell some of the cassava to a tune of UGX 200,000 and used part of the money to buy 4 turkeys. She intends to use the turkeys for breeding to multiply which she will later sell and use the proceeds to purchase bulls for ploughing. This she says will ease land preparation and expand acreage.



A/O and ACDP cassava beneficiary (Andera Esther) in her cassava garden - Apokor South West, Apokor Parish, Tororo District

MR. OFWONO FROM PODAKA VILLAGE KISOKO SUB-COUNTY, TORORO DISTRICT

Ofwono John Martin is a farmer from Podaka village Kisoko Sub-county. He is a member of Kisoko Rice Growers Association. In March 2020 he paid UGX 148,500 and enrolled as a rice farmer under his group. He got 20 kgs of WITA-9 rice seed, 1 piece of tarpaulin 6M X6M and 25kgs of DAP 25kgs of urea. The farmer was trained together with members of Kisoko Rice Association on best agronomic practices. He then planted one acre of rice and obtained the following success.

“One harvest, he got 1.5 tons of rice from his 1 acre, sold at UGX 1500 and he got 2, 250,000= which he invested in five more acres of rice the subsequent season. In the subsequent season he harvested and got 10 tons of milled rice. He sold 7 tons at UGX 1500 and got 10,500,000 million shillings. He then bought land at 5.6 million, took his daughter to Busiitema University and solved other domestic problems.

Mr. Toloba James from Kweny women group, Kwapa Sub-county, Tororo district

Mr. Toloba James produced maize using ACDP inputs. He harvested 1,200kgs of maize (12 bags), sold 100kgs at 600 and got 600,000 and he has invested in 3 acres of maize. Before the ACDP intervention he was harvesting 2 bags per acre.



Maize harvest by Toloba James in Kwapa Sub-county, Tororo District



Rice growing by Mugwabi Asuman, Hisega Ward, Hisega Cell, Butaleja Town Council

General Success Stories on Returns in Butaleja District

Rice: Formerly the farmers were growing K-Series and Benego and were getting 1200 Kg per acre. Under ACDP the farmers got WITA-9 seeds plus fertilizers and got increased yield from 1200Kg to 2,000 per acre for WITA-9 Seed plus fertilizers.

Cassava: Cuttings from one acre get 40 to 60 bags for normal garden. NAROCAS1 yields 60 bags where as NASE 14 and NASE 3 yield 50 bags. The local varieties are Nigeria, Magana which yield only 40 bags from one acre

- A farmer gets money from planting materials where sell of 60 bags each at UGX 10,000 earns UGX 600,000.
- The farmer also earns money from cassava chips where from one acre he/she gets 8MT of dry cassava chips. With each kilogram sold at UGX 500 the farmer earns UGX 4 million.

Maize: From 1 acre the farmer gets 2,000 kilograms of maize grain each sold at UGX 500 earning him/her UGX 1,000,000.

When maize grain is processed, the farmer earns more from maize brand than from grain. Maize flour goes for UGX 1,000 and from 2,000 kgs gets 1,200kg of flour where he/she earns UGX 1,200,000. From the 800kg of bran sold at UGX 600, he/she earns UGX 480,000. The cost of milling is UGX 150 per kilo costing UGX 300,000. Therefore, the farmer earns a total of UGX 1.38m, which is UGX 380,000 more than the farmer that does not process.

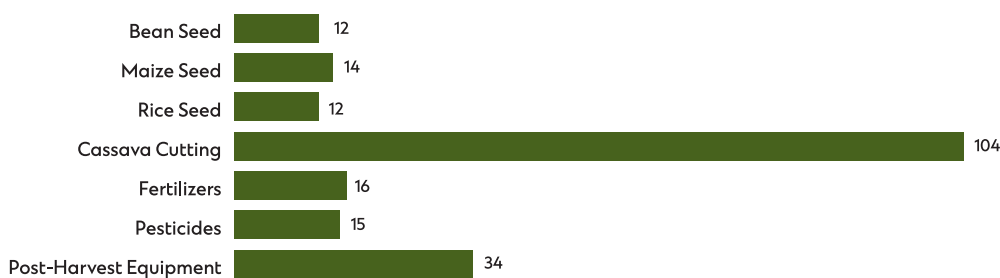


DEVELOPMENT OF AGRO INPUT MARKET

Establishment of local Agro- Input dealers' network

In order to promote use of good quality agro – inputs, the project has accredited 168 National Agro – Input dealers who have established outlets at both district and sub-county level. The project is in the process of accrediting 128 more agro input dealers in order to strengthen the input distribution network.

Number of Accredited Agro-Input Dealers by type of input



Promotion of agro-input quality standards

ACDP has engaged in mass media campaigns to sensitize farmers and agro input dealers to handle agro-inputs. In addition, the project supported the National Seed Certification Service of Department of Crop inspection and Certification to engage seed companies to increase production of the required good quality maize, beans and rice seed through inspection, laboratory analysis and market controls. This resulted in the certification of 15,002.35 acres of maize, 806.5 acres of rice and 4,508.35 acres of beans which resulted in the production of 1,290.35 MT of rice, 18,900.14 MT of maize and 3,606.68 MT of beans.

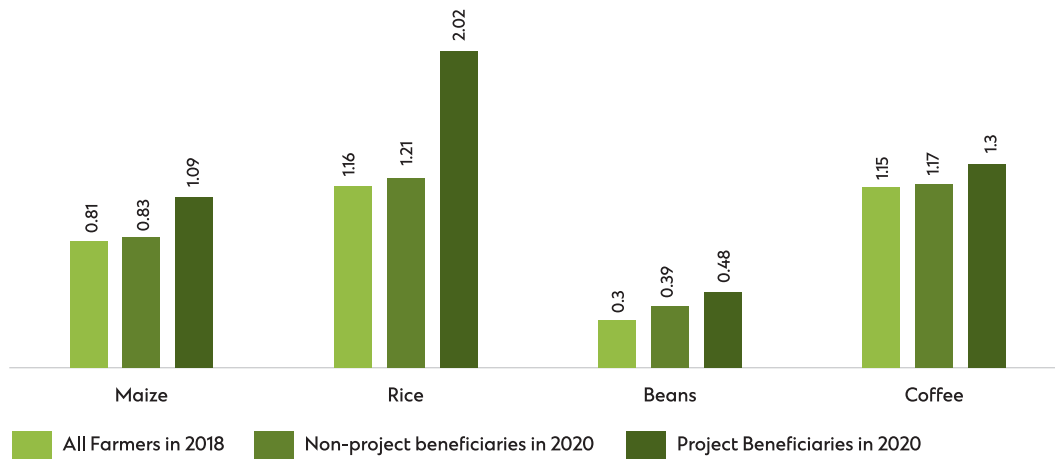
The project is in the process of accrediting 128 more agro input dealers in order to strengthen the input distribution network.



Increase in Production

The average household production in metric tonnes (MT) for e-voucher beneficiaries increased exponentially by 32% for maize, 67% for rice, 55% for beans and 12% for coffee farmers compared to non-project beneficiaries as seen in Figure below;

Change in Average Household Production in Metric Tonnes for ACDP Beneficiaries



A farmer receiving fertilizers and Tarpaulins in Butaleja District in Season 2021A

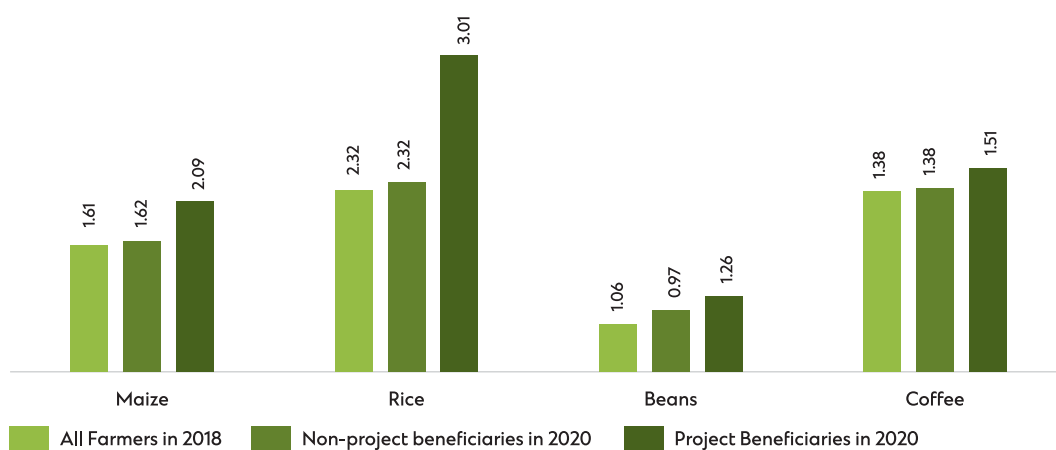
²There were challenges estimating the actual yield of cassava during the survey since it grows over a period of one year and is harvested in piecemeal throughout the year. The project under the Agriculture Statistics Division is developing standard yield estimation methods for such cases.

Increase in Productivity

The project supports inputs for a maximum of 1 acre per beneficiary implying that ACDP inputs have been applied on approximately 200,984 acres. The application of improved technologies has resulted into increased production and productivity of maize, beans, rice, cassava and coffee among smallholder farmers.

The average household yield (MT/Acre) for project beneficiaries increased by 30% for maize, 27% for rice, 19% for beans and 9% for coffee farmers compared to non-project beneficiaries at 1% for maize, 0% for rice, -8% for beans and 0% for coffee farmers (ACDP Midterm Evaluation Report, 2020). The yield estimates for cassava² will be reported at a later date.

Change in Average Yield (metric tonnes/ACRE) for project beneficiaries



Monitoring performance of coffee after fertilizer application - Bushenyi district



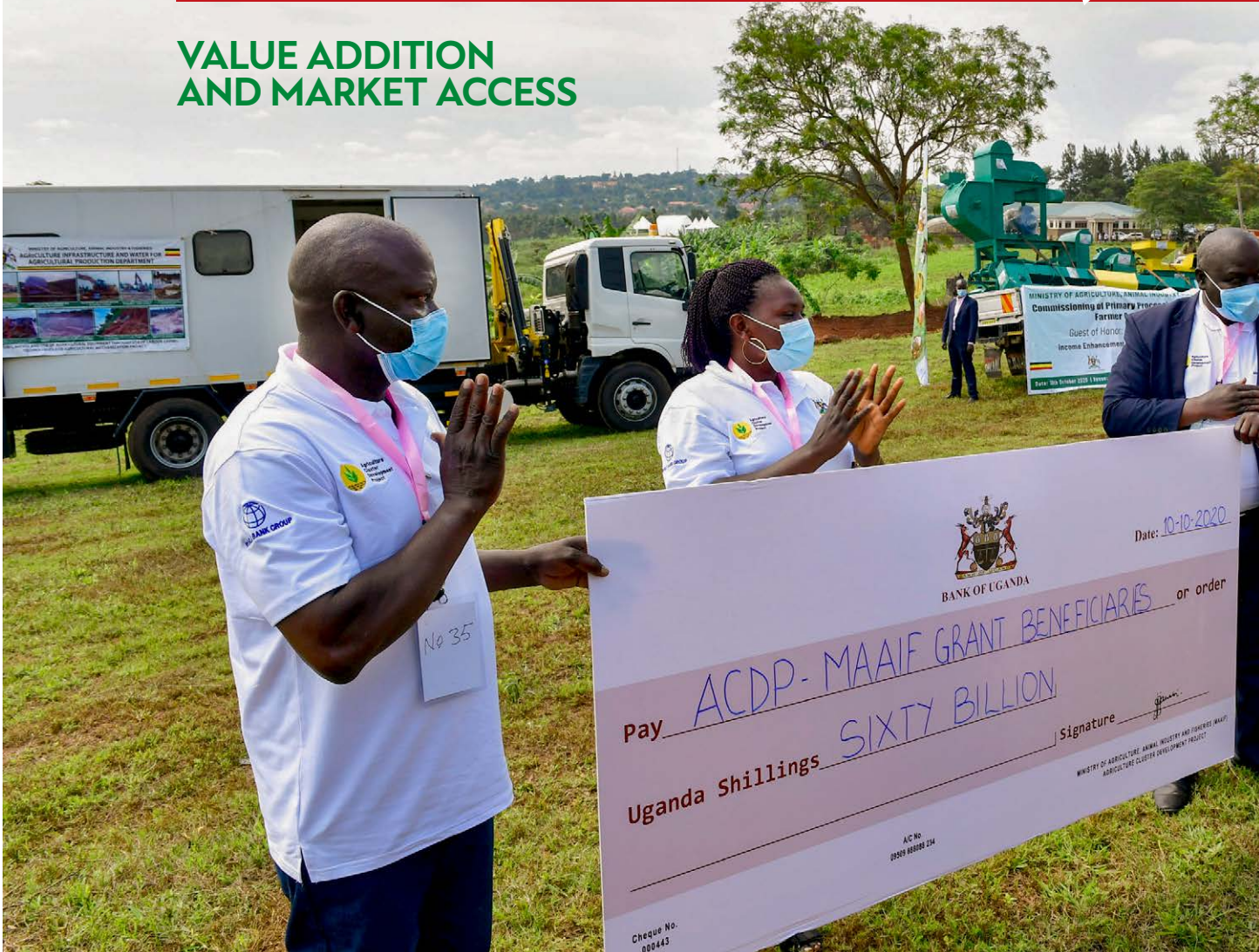
Agronomist & Focal Person Kabale DLG visiting one of the beneficiary group members' gardens



COMPONENT 2



VALUE ADDITION AND MARKET ACCESS



H.E. Yoweri Kaguta Museveni handing out a cheque to representatives of matching grants beneficiaries to purchase post harvest handling and value addition equipment

OBJECTIVE

This component supports activities and investments to improve marketing and post-harvest handling of farm produce and measures to eliminate bottlenecks and trouble spots in rural access roads critical for the movement of farm produce to markets. The component builds the capacity of the Area-based Commodity Cooperative Enterprises (ACCEs) and RPOs to effectively perform value addition and become marketing agents (aggregators) of farm produce from their affiliate farmer organizations. The objective of this component is to:

- i. Improve the operating capacities ACCEs/RPOs;
- ii. Increase volume (MT) of selected commodities marketed by ACCEs/RPOs;
- iii. Provide additional volume of storage capacity;
- iv. Increase the percentage of ACCEs/RPOs investing in post-harvest and/or marketing; and
- v. Rehabilitate road chokes/bottlenecks on community farm access roads.



AGRIBUSINESS SKILLS DEVELOPMENT

The capacity building program entails business health checks, mindset change, farming as a business, core farmer organizations principles, access to market and financial linkages. At the end of this program, the farmer organization's leadership and members are expected to have acquired entrepreneurship and agri-business development skills. Out of the 983 FOs that applied for MGs, 326 FOs have received the first phase of the trainings.

In addition, ACDP with support from Enterprise Uganda (EUg) has built the capacity of 2,280 farmer leaders from 570 FOs in assessment and negotiation skills, better understanding of their businesses, and the five pillars of business (Finance, human resource, marketing, operations and strategy). Out of the 219 FOs, whose farmer leaders were trained, **Approximately 171,000 members have been trained in entrepreneurship and business management.**

A total of 938 farmer groups have been supported to develop business plans.

Improved Capacity of 2,280 farmer leaders from 570 FOs in assessment and negotiation skills and better understanding of their businesses.



IMPROVING CAPACITIES OF FARMER GROUPS

In an effort to strengthen vertical and horizontal market linkages, enhance productive alliances around ACCEs/RPOs and raise the required marketable volumes to sustain the linkages, ACDP with support from UCA trained 2,426 DLG staff (DCOs, AOs, CDOs & CBFs) across all project districts to mentor 30,000 Farmer Groups in production planning, standards and quality management, bulking, value addition, marketing, pricing, customer management, business networking and collaborative linkages.



President Museveni flags off primary processing equipment for farmer organisations during a function at Namalere on Saturday Oct 10th as Agriculture minister Ssempijja and other technocrats look on.

POST HARVEST HANDLING & MARKET ACCESS

ACDP supports investments of locally based farm cooperatives and associations in community-level post harvest handling, grading, bulking and storage and processing for value addition. The mechanism for this support is a matching grant that finances two-thirds (67%) of the cost of the purchase of equipment and facilities needed to scale up and improve the effectiveness with which the ACCEs are able to carry out these functions, including construction of community primary storage facilities. The grant beneficiaries are expected to contribute the remaining cost of the investment equivalent of 33%. From project inception to date, the Ministry has signed grant agreements with 362 Farmer Organisations from 57 Project districts worth UGX 110.5 billion, in which the Government of Uganda will contribute UGX 74 billion (67%) while farmers will contribute UGX 36.5 billion (33%).

The Ministry has signed grant agreements with 362 Farmer Organisations from 57 Project districts worth UGX 110.5 billion, in which the Government of Uganda will contribute UGX 74 billion (67%) while farmers will contribute UGX 36.5 billion (33%).





Criteria for Selecting Matching Grants Beneficiaries

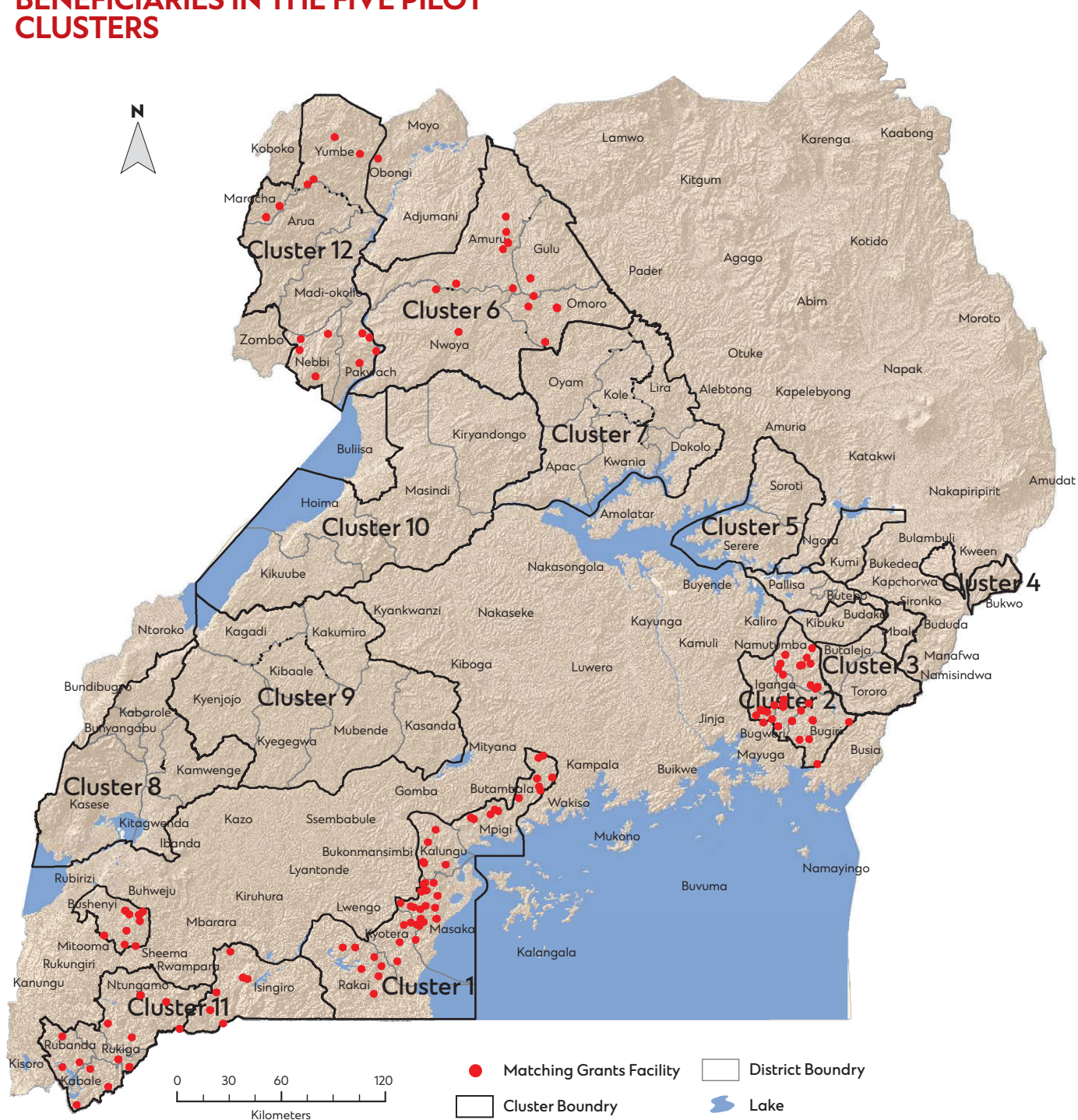
The project provides matching grants to centralized ACCEs and Farmer organizations that meet the following criteria;

- Be legally registered with relevant government authorities such as the department of social services or the Director of Cooperative Development
- Have a membership of at least 3 producer organizations (POs) or 30 members
- Have Profiled, registered and members receiving inputs under e-voucher subsidy program
- Have a functional management and governance structure in place
- Be involved in agricultural activities of the ACDP selected commodities
- Be in existence for at least a period of one year
- Be able to contribute at least 33% of the cost of their needed investment either in cash or in kind
- Have proof of ownership of land where they plan to establish their investments
- Have a physical address in one of the ACDP targeted districts

GRANTEE DISTRIBUTION ACROSS 12 CLUSTERS

Cluster	Number of Supported FOs					
	Beans	Cassava	Coffee	Maize	Rice	Total
Cluster 1	0	0	49	7	0	56
Cluster 2	0	0	0	34	7	41
Cluster 3	0	3	0	6	7	16
Cluster 4	0	0	5	12	0	17
Cluster 5	0	7	0	0	7	14
Cluster 6	7	0	1	1	27	36
Cluster 7	4	21	1	0	2	28
Cluster 8	0	0	11	10	0	21
Cluster 9	0	0	12	24	0	36
Cluster 10	0	0	1	19	0	20
Cluster 11	32	0	21	0	0	53
Cluster 12	0	22	2	0	0	24
Totals	43	53	103	113	50	362

LOCATION OF MATCHING GRANTS BENEFICIARIES IN THE FIVE PILOT CLUSTERS



So far a total of storage capacity of 42, 714 MT has been established in 25 districts. More is to be established after construction of storage facilities in more 32 districts.





A cassava store at Aliamu Cupiria Timbakua Seed development association (ACTS) located in Yumbe district, a Matching Grants beneficiaries

INCREASE IN STORAGE CAPACITY

Cluster	Completed Storage Facilities (MT)				
	Rice	Cassava	Coffee	Maize	Rice
1	-	-	17,782	2,444	-
2	-	-	-	6,800	1,440
6	1,180	-	200	200	5,370
11	4,560	-	990	-	-
12	-	1,548	200	-	-
Total	5,740	1,548	19,172	9,444	6,810



Cassava solar drying at Aratarach Cooperative Nebbi

Increase in processing capacity - value addition

In order to improve quality of the farmers' produce, farmer organizations have been supported to acquire several value addition equipment as indicated in the table below

VALUE ADDITION EQUIPMENT									
Cluster	Value Addition Equipment								Total
	Cassava Mills	Maize Mills	Coffee Hullers	Beans Sorters	Rice Mills	Weighing Scale	Moisture Meter	Drier	
Kalungu	-	6	42	-	-	16	18	-	82
Iganga	-	32	-	-	7	3	2	2	44
Amuru	-	1	-	2	20	4	9	7	36
Ntungamo	-	0	14	5	-	21	21	-	61
Nebbi	15	-	2	-	-	14	14	18	63
Total	15	39	58	7	27	58	64	27	286



Cassava processing facility (hammer mill capacity of 1-3 tons/hour) installed at Aliamu Cupiria Timbakua Seed development association (ACTS)

Some of the benefits observed so far include:

Hulling farmers' coffee at a low cost

- Readily available market for farmers' coffee
- Eliminating middlemen thereby putting more money in farmers pockets
- Creation of jobs for mainly the youth who work in the established processing facilities
- Enhancing production of more quantities of these commodities since there is ready market within farmers' neighbourhoods.



Women sorting beans at Karubanda tukorerehamwe group in Rukiga district

Karubanda Tukorere Hamwe located in Bukinda Sub county, Rukiga district is one of matching grant beneficiaries that received under the first cohort. They received UGX 231,505,454 and farmers contributed UGX 114,025,074. They have completed construction of 40 MT storage facility, purchased bean sorter and grading machine, weighing scale and moisture meter supplied by Weighcom U Ltd. Their major business is producing high quality beans, sorting them and selling to seed companies. All the 38 members of the group are also receiving inputs under the e-voucher and their production has increased. The chairperson of the group Mrs. Christine Muhwezi says *'Before ACDP we were producing 2 tonnes of beans but ACDP helped our farmers, we were trained good agronomic practices so the yields have increased so that is why you see the beans have been increasing we never had such harvest before. This has increased our income because yields have increased as every member averagely produces 700 kilograms and estimate of 26 Metric Tons was harvested during the 2020B season'*.

Because of bulking together, the group has entered a business with Green Farm Limited, based in Kawempe to purchase all graded beans and have so far bought 10 MT fetching total value of UGX 40 Million. *'ACDP has improved on our markets because before we had poor quality beans and of low volumes but of now, we have high quality and of high volume'* says Christine. The members

are using e-voucher system which helped every member to access seed, fertilizer and tarpaulins which is helping farmers to dry their beans yet previously they were using bare grounds to dry the beans whereby, we would go to the market and find out that the quality of the beans does not attract the required price.

Previously we would sell a kilogram of beans at UGX 2,000 but now we are selling at UGX 4,000. The farmers are currently using half the capacity of store due to their inability to produce more acreage and lack of working capital to buy bean seed from other farmers. *'Government should support us with some income to start the real business because the capacity of our store is 40 tonnes and for now, we only have inside 26 tonnes but if we some money, we would have gathered some beans in the sub-county and fill the store with the capacity required'* says Kellen Kisizi, Vice Chairperson.

Another member Evelyn, says that *'Now looking for market is very easy for us because we all bring our beans to our store and buyers know where our store is so they have to come and look for us even if we do not look for them, they have to look for us because they know we have a store in Kagorogoro Rukiga district. We get the money we want because they know we have good quality seeds that is why we say that ACDP has really helped us'*

WEST ACHOLI COOPERATIVE UNION IN GULU DISTRICT



Storage facility for West Acholi Cooperative Union in Gulu

West Acholi Cooperative union is a member based cooperative union engaged in various crop enterprises including; Rice, Maize, Soybean and Sorghum among others. WACU works closely with 10867 smallholder farmers organized under primary cooperative societies affiliated to WACU in the district of Gulu, Nwoya, Amuru and Omoro.

For the past years, WACU has been engaging in rice production both at individual smallholder level and in its farm land in Nwoya district. Despite engagement in rice value chain, WACU and its affiliates were faced with challenges of counterfeit inputs, post-harvest losses, storage problem and low and fluctuating prices of the rice produced. This challenge was consequently resulting in to low production and productivity and poor produce quality associated with low prices in the market.

In 2020, with the support from Ministry of Agriculture Animal Industry and Fisheries/ World Bank under Agriculture Cluster Development (ACDP) Programme received a matching grant to construct 120MT storage capacity, drying yard, farm house and two stanch toilet at Union farm in Nwoya, fully fenced. They have also installed 2.5 MT/hr rice processing mill. Five primary cooperative societies benefited from store construction, rice mills and input subsidy. This intervention resulted into increased production

and productivity, improved post-harvest handling and high quality produce coupled with increased value addition.

WACU signed supply contract with Mburugu dairy cooperative society in Kenya to supply rice bran to the tune of 300MT per year at a cost of 490 Ugx. Currently WACU is processing quality rice already supplying in Gulu City and linking up with other rice traders from Kampala and southern Sudan. Produce quality at farm level has improved as a result of use of tarpaulins and good storage facilities put in place. Quality at processing stage has also been aided by pre-cleaner section of the rice milling machine and grader. We are now working on packaging and branding of the rice product so as we can access other bigger market such as super market. Due to the above, we are selling our rice between 2000-2500Ugx per kilo despite a fall in rice this year. Being a member based co-operative Union with a vision and mission of providing sustainably social and economic demand driven members services, that mean members well fare is our is paramount.

Therefore, the proceeds/margin realized shall be passed onto farmers' farm gate price. For example, currently we are buying rice from our members at UGX 1000 per kilo (unprocessed rice) above the current market of UGX 800, continuous extension services to our members farmers.

ARATARACH FARMERS' COOPERATIVE SOCIETY LIMITED - CASSAVA

The production level of the cooperative increased from 69MT to 134MT. This is based on the data collected by the production manager of the cooperative. This was made achievable due to the mass sensitization of the farmers under the ACDP Program. The total land under cultivation also increased. The members of the cooperative were able to cultivate 112 acres of land as compared to the previous data of only 71 acres. With the able of the funding from ACDP, a modern machine house was constructed, a bigger solar drier erected and also a more effective milling machine installed (1ton per hour cassava miller). The processing equipment installed have enable the cooperative to handle more volume of cassava. The cooperative is now able to dry 3 tons of chipped cassava in a day on a good sunny day as compared to previous one of only one ton a day. Farmers are also able to dry their cassava on clean environment (tarpaulins) which were provided under ACDP.

Branding and Packaging: the cassava packaging materials are branding in the name of Aratarach Farmers' Cooperative. This makes it very easy for any person to easily identify our product and also easy carrying of our product home. Acquisition

of post handling inputs like tarpaulins has been made more affordable and easier for the farmers. Out of the 97 farmer members enrolled under the e-voucher system of the 161 membership, 77 members have received their inputs. Easing the work in the cooperative as farmers can also handle their cassava processing in a good manner

Marketing: as the cooperative does packaging of its cassava flour in a well branded materials, this has made it easier for our customers to buy our products very fast. The cooperative supply big hotels within Nebbi town like Sateleite one, Leosim. Other markets are the refugees and host community of Yumbe (Pidi Pidi camp), South Sudan and DR Congo, Family diet in Uganda and also negotiating with Uganda Nile breweries for supply of 30MT per month.

Despite all these achievements, the cooperative has not yet exploited its potential to the fullest due to the following challenges: the lack of electricity which can't allow us acquire bigger processing machinery and the lack of pipe water which stops the cooperative from handling bigger volume of fresh cassava tubers for processing.



Processed, packaged and branded cassava from Aratarach Farmers' Cooperative

ELIMINATION OF BOTTLENECKS ON COMMUNITY ACCESS ROADS

To improve the inflow and outflow of agricultural inputs and commodities into high production areas, the project rehabilitates chokes/ bottle necks on community farm access roads leading to markets and bulking centres. Rehabilitation works valued at UGX 13.2bn in the 5 pilot districts are at overall 80% physical progress. They are spread over a length of 254 km including 1 bridge, 8 box culverts, 33 swamp fillings and several grading/gravelling sections.

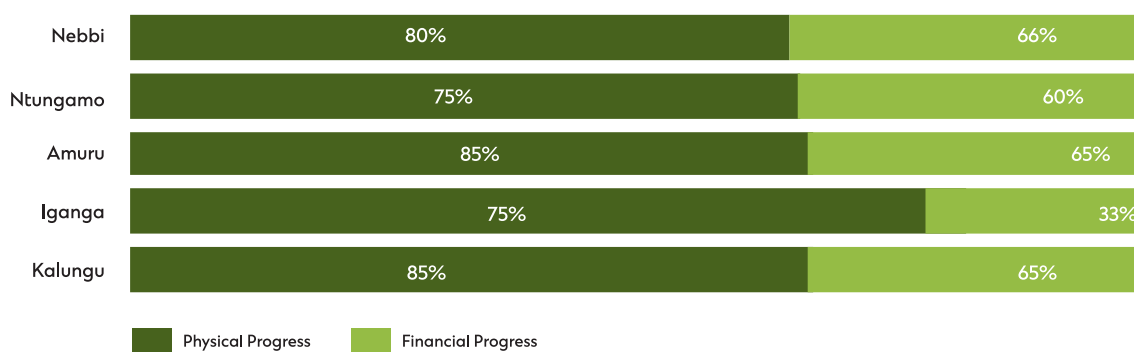
Criteria for Prioritization of road chokes for rehabilitation

Criteria for selection of farm access road chokes for rehabilitation was developed in collaboration with DCTs and CMSPs and emphasized

- i) Connectivity to facilities along the agricultural value chain
- ii) Connectivity within the cluster
- iii) Connectivity to ACDP Beneficiaries.

The DCTs for all the 57 project districts identified 132 major chokes over 124 road sections totalling to 4,560Km that were further prioritized by the CMSPs.

Figure 10: Overall Physical and Financial Progress of works in the 5 pilot districts



(before) Improvised crossing on Omugenyi – Ahamuyaga Road in Ntungamo (After) Constructed Box culvert



Flooded section of Buwanda swamp in Kalungu district (left) and after works the road was raised, filled with murram and culverts installed allowing all seasonal access

Rehabilitation works valued at UGX 13.2bn in 5 district



The procurement process for rehabilitation works for 21 districts (18 from pilot clusters) is at bids evaluation report stage. The adverts for Lots 6 – 35 were run in December 2020 and bids opened in February 2021, evaluation is completed and ready for submission to contracts committee. The draft bills of quantities (BoQs) for the remaining 29 districts from the 7 roll-out clusters are completed and under review by the districts.

SUMMARY OF SCOPE OF WORKS SURVEYED AND COST ESTIMATES							
S/No	Category		Survey & Design Scopes				Estimated Cost (USD Million)
			Roads		Major Bottlenecks/Chokes		
			No.	Length (Km)	Swamp Sections (Km)	Structures (No.)	
1	Pilot District	7	29	254	30	95	3.5
2	Roll-Out Districts + 3 Districts	21	124	1104	127	252	28.6
3	Roll-out Cluster	29	180	1446	93	183	24.2
Total		57	333	2804	250	530	56.3

Note: Available budget is far less than the required total amount in the project districts



On going works in Kyenjuba Kakanena Ntungamo District

COMPONENT 3



POLICY, REGULATORY AND INSTITUTIONAL SUPPORT

OBJECTIVE

The objective of this component is to put in place institutional frameworks to support key MAAIF functions.

The component aims at;

- i. Capacity Building for Policy and Regulatory Functions for crop inspection, certification and Mechanization,
- ii. Preparation for Agricultural Water Management Investments,
- iii. Strengthening the Agricultural Statistical Capacity and
- iv. Management of Fall Armyworm and support to investments that create an enabling environment for delivering the project and prepare the future infrastructure investment programs.

Enforcement of Agro-chemical standards

To enable on-site testing and provide real-time results on fertilizer samples collected from agro-input dealers. The project has supported the department to procure laboratory equipment, materials and consumables for the fertilizer analytical laboratory worth UGX 1.8bn.

Strengthening Crop Inspection and Certification

A total of 1,695 agro input dealers have been trained, 968 approved and 468 registered.

As part of the requirements for attainment of certification and standards of the International Seed Testing Association (ISTA), the project is funding renovation and expansion works at the National Seed Laboratory at Kawanda valued at UGX 3.8 bn.

Policies, standards and guidelines

The guidelines for certification of vegetative propagated materials were developed and the Manual for Safe Use of Agrochemicals revised, both are ready for dissemination.



AAS machine for testing fertilizer quality including concentration of heavy metals



Artistic Impression of the National Seed Testing Lab at Kawanda undergoing renovation and expansion

AGRICULTURAL WATER MANAGEMENT INVESTMENTS

Establishment of Solar Powered Irrigation Systems at Zonal Agricultural Research and Development Institutes (ZARDIs)

To enable research all year round, seven (07) 5-acre solar powered irrigation systems valued at UGX 2.1bn are being established at 7 Zonal Agricultural Research and Development Institutes (ZARDIs). These include, Bulindi ZARDI in Hoima District; Kamenyamigo ZARDI in Lwengo district; Nabuin ZARDI Nabilatuk District; Abi ZARDI in Arua District; Buginyanya ZARDI in Mayuge District; Ngetta ZARDI in Lira District and Rwebitaba ZARDI in Kabarole District. Overall physical progress is estimated at 96%.

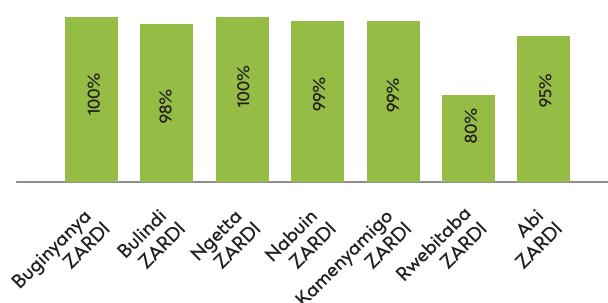


Inspection of Reservoir at Nabuin ZARDI




Solar panel inspection at Kamenyamiggo-Lwengo

Progress of Installation of Solar Powered Irrigation Systems



UGX 2.1bn for solar powered irrigation systems



Establishment of smallholder coffee irrigation systems

The project is supporting establishment of small holder coffee irrigation systems in 9 districts.

TABLE SHOWING SUBMITTED EXPRESSIONS OF INTEREST FOR COFFEE IRRIGATION MODELS

#	District	Target beneficiaries	Eol Received	Successful Eol	Failed Eol
1	Bukwo	6	17	14	3
2	Kassanda	10	21	21	0
3	Kikuube	3	6	5	1
4	Hoima	7	15	15	0
5	Kiryandongo	5	12	10	2
6	Kabarole	4	4	4	0
7	Kasese	3	12	12	0
8	Masindi	9	11	11	0
9	Bunyangabu	3	2	2	0
Total		50	100	94	6

Feasibility Studies and Detailed Engineering

The project is supporting Feasibility studies and detailed engineering designs for 5 irrigation schemes & ESIA Studies. These are: Lumbuye Irrigation Scheme in Iganga District and Bukagolo Irrigation Scheme in Bugiri District and at Aswa and Ayila Irrigation Scheme in Nwoya and Amuru Districts.

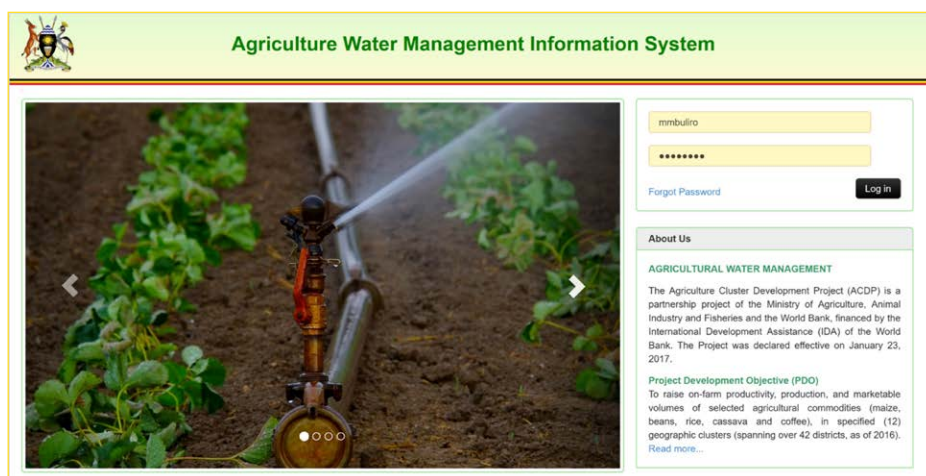
INCREASE IN IRRIGATED AGRICULTURE BY 1,136 HA

Name of Irrigation Scheme	District	Acreage (ha)	Commodity
Ayila	Amuru District	97	Rice
Aswa	Nwoya District	287	Rice
Lumbuye Block 1	Iganga District	198	Rice
Lumbuye Block 2	Iganga District	203	Rice
Bukagolo	Bugiri District	351	Rice
Total		1,136	

Agriculture Water Management Information System

In addition, the project supported the development of the Agricultural Water Management Information System (AWMIS) which is a web-based geo tagged system that visualizes information on Agricultural water investments across the country including irrigation schemes and valley dams and fish ponds, for decision support. A total of 261 irrigation sites have been mapped using an online data collection app and their attribute information can be accessed through the AWMIS. During the

mapping exercise, data collected includes; Name of Irrigation site, Location information up to village level, type of irrigation technology used, source of water, type of crop grown, yield of the crop, area under irrigation, estimated amount of water used per day, type of water storage, method of water abstraction, size, length and quality of pipes among others, for each irrigation site was collected and accessed online.



Farm land planning Strategy

ACDP supported the development of a farmland planning strategy and guidelines which highlight strategic directions for the department to provide farmland planning services at national level for the different Agro- ecological zones.

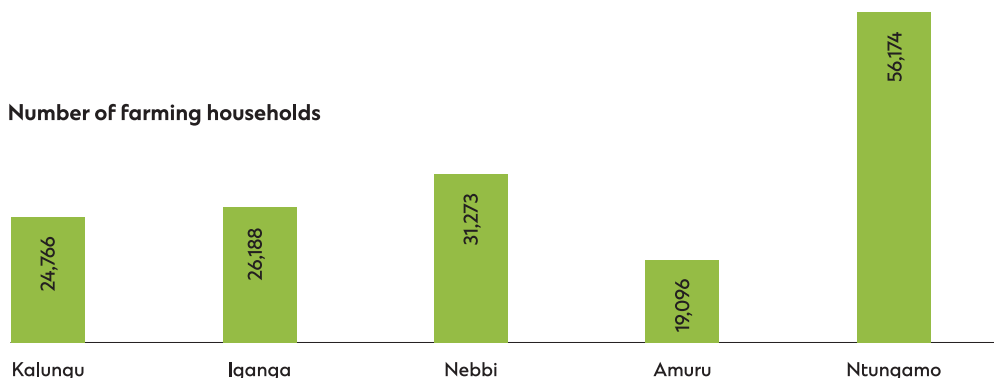
Increase in irrigated Agriculture by 1,136 Ha



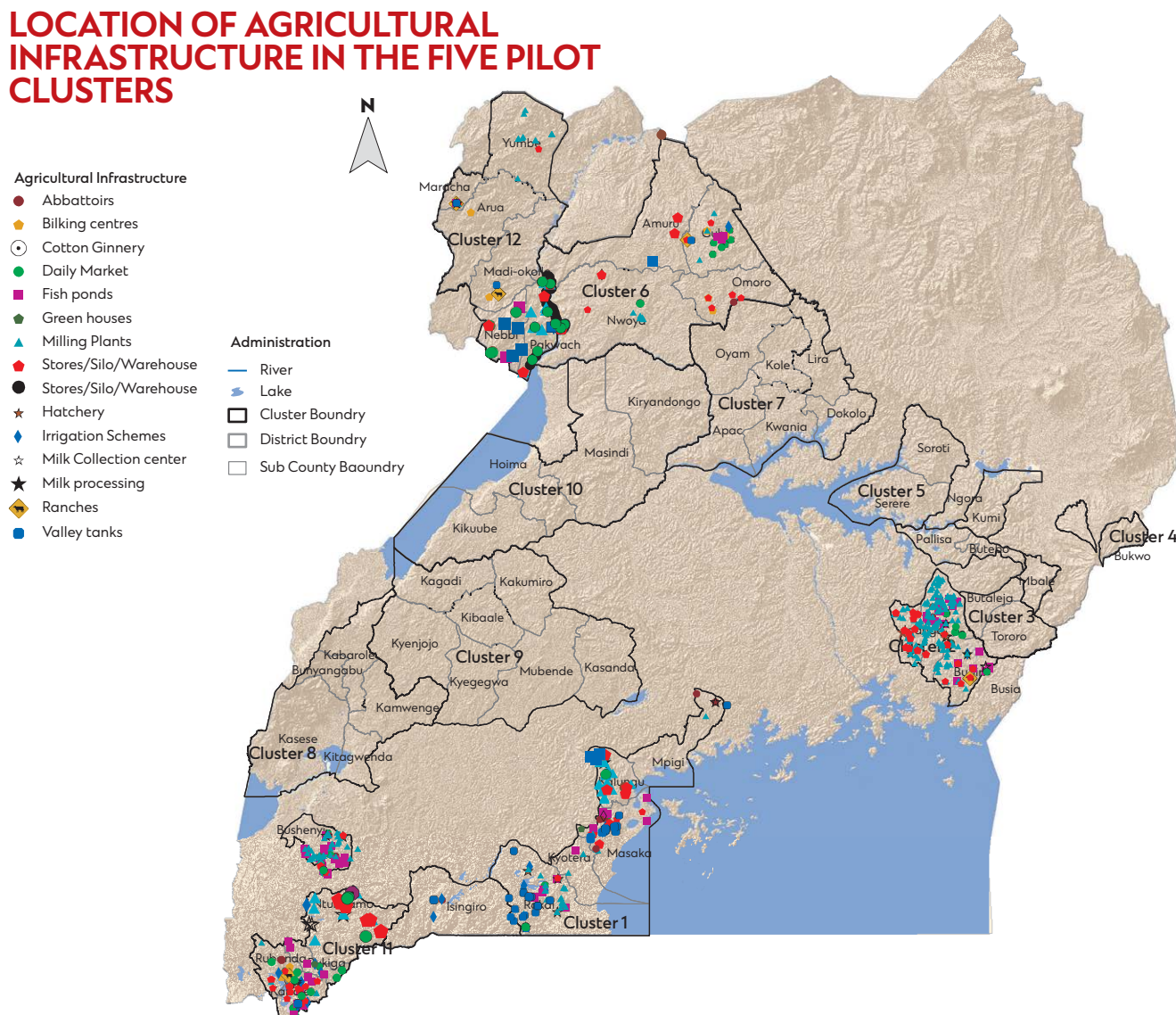
Strengthening Agricultural Statistics and GIS knowledge base

The project is supporting the Planning department of MAAIF to collect Administrative Agricultural statistics and establishment of a Geographical Information System (GIS) database in order to store and create a one-stop access to spatial information on all Agricultural infrastructure and MAAIF project interventions, beneficiaries and farmers. Development of a GIS database will provide location and attribute information of all MAAIF investments and this will guide evidence-based planning, decision making and reporting. So far 156,497 farming households have been registered in 2,862 villages in 5 districts, 1400 Agricultural infrastructure and 505 Agro – Input dealers mapped in 25 districts. Sample statistics and map shown shown below.

Number of farming households



LOCATION OF AGRICULTURAL INFRASTRUCTURE IN THE FIVE PILOT CLUSTERS



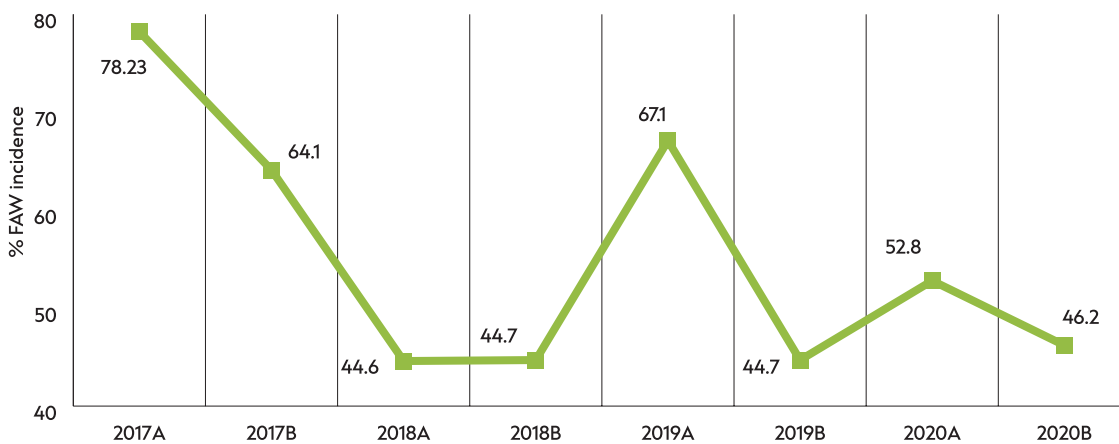
Fall Army Worm Management

ACDP supports response to the emerging sector priorities such as epidemic outbreaks of pests and diseases attacks on sector priority commodities such as the Fall Army Worm which attacks maize. The project focuses on the following:

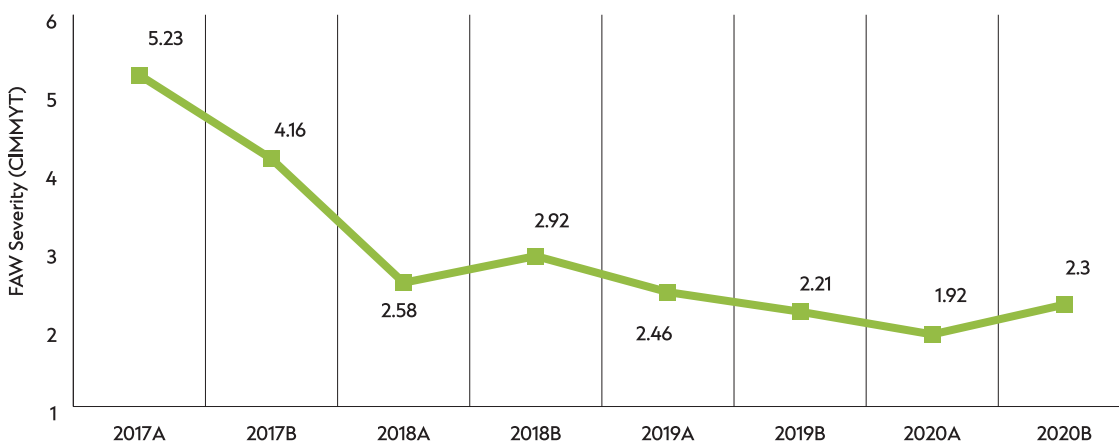
- i. Surveillance and mapping of FAW and Desert Locust infestation.
- ii. Establishment of an early warning system
- iii. Provision of demonstration equipment and chemicals to combat FAW.
- iv. Research on Integrated Pest Management (IPM) of FAW - natural enemies and agro-chemicals for controlling FAW.


FAW control demonstration inputs and equipment, including manual knapsack sprayers (90 out of 202), motorized knapsack sprayers (100 out of 117) and PPEs (500 sets out of 250 planned sets) were procured. Procurement process of 109 manual and 141 motorized knapsack sprayers is still ongoing. 2,700 litres out of 3,000 liters of fall armyworm control pesticides (Profenofos 40% + Cypermethrin 4%) were also procured and distributed for farmer demonstration to affected Local Governments. All the planned 6,500 posters (A2 laminated) and brochures (A4 laminated) were printed and distributed to over 80 districts across the country. This no doubt has strengthened MAAIF's fall armyworm control efforts

Average FAW incidence trend (2017-20)



Average FAW Severity Trend (2017 -2020)





The sustained FAW control efforts have reduced the Fall Army Worm severity/ damage levels from >6 (35%) on a 1-9 CIMMYT scale to <2 (5%) since the project intervention.



Control and Management of the Desert Locust (DL)

The Project has supported control and management of the Desert locusts through:

- i. Capacity building of stakeholders to undertake surveillance, reporting and control of DL spread and awareness creation, sensitization and information dissemination
- ii. Surveillance, monitoring and reporting DL spread in Eastern and Northern Uganda
- iii. Enhancing Preparedness for Desert Locust Ground Control Operations

5000 pieces of KN95 masks successfully procured and delivered to UPDF for use. This is in bid to reduce exposure of the spray teams to the toxic pesticides they use whilst controlling the Desert Locust. At least 36 Extension officers from Bugishu/Sebei, Acholi, Teso and Karamoja have been effectively trained in the biology, behaviour, surveillance, reporting and control of the desert locust. In addition, 700 UPDF personnel were trained in safe use and handling of pesticides whilst controlling desert locust from the barracks of Olilim Barracks, Soroti Flying School, Moroto and Karenga.

COMPONENT 4



COORDINATION AND MANAGEMENT, AND ICT PLATFORM

The objective of this component is to provide support services to the three technical components responsible for coordination and management of the project at national, cluster and district level. The component aims at;

- i. Financing the incremental operating costs for the PCU, CMSPs and DCUs,
- ii. Undertaking monitoring and evaluation activities and impact evaluation studies,
- iii. Developing and implementing web-based, geo-tagged ICT platforms for learning, knowledge management and stakeholders' feedback.

To strengthen project implementation coordination committees have been established and are functional at national, cluster and district level. The project completed signing of Memorandum of understanding with all project districts to guide project implementation at that level, the districts were guided to open project accounts and funds amounting to UGX 13.29 bn has so far been disbursed to all participating district local governments to facilitate activity implementation for the FY 2018/19, FY 2019/20 and FY 2020/21

These include 1 Project Technical Committee, 1 National Steering Committee, 12 Cluster Multi-Stakeholder Platforms and 57 District Coordination Teams. Up to 998 Community based Facilitators (CBFs) were also recruited to support mobilization and sensitization of farmers at grassroots levels.

As a way of increasing mobilization for farmer registration, enrolment and input redemption, One (1) Community Based Facilitator (CBF) has been recruited for at least 20 – 30 farmer groups . In all a total of 983 CBFs have been recruited. These will help deepen mobilization of farmers at the lower levels and ensure cluster level PCU representation to drive and focus on the project deliverables. This intervention has greatly improved coordination and consequently enrolment numbers.

Disruptive digital technologies for transfer and disseminate agricultural information

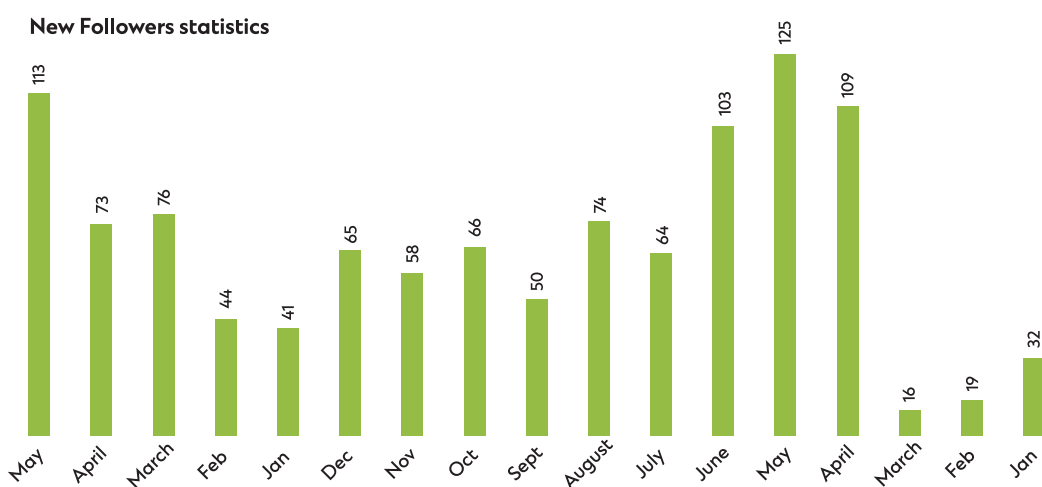
One of the major interventions supported by the project is digitization of Agricultural ICT Platforms. A number of platforms are under development and these include the following;

- a) E-extension system – The solution will improve delivery of agricultural extension and advisory services to farmers, e-diary, digitizing agricultural equipment hire, real-time alerts of pest and diseases outbreaks, and early warning, etc.
- b) E-Markets – The solution will offer an online market linkages system for all value chain actors including producers, traders, input suppliers, off takers and processors.
- c) Soil testing –The solution offers mobile soil testing services to farmers.
- d) Financial Inclusion – The solution will be a parallel e-voucher management system.
- e) Data analytics –Deliverables include Enhancement of NFASS and development of the Agricultural Water Management MIS, Agricultural Mechanization Technologies MIS and ACDP MIS.

Communication and Knowledge Management

The Project has disseminated project information through Various television and radio talkshows, Youtube videos and has carried out Social media engagement using twitter @UgAcdp with an online following of 1,278 followers. In addition, project news was featured in the various national and local print media including, New Vision newspaper, Monitor Newspapers, Manifesto magazine, Transformation magazine among others. All Project publications can now be downloaded from the MAAIF Website

<https://www.agriculture.go.ug/acdp-publications/>



Strengthening Environmental and Social Safeguards in Agriculture Sector

In order to strengthen ESS system in agriculture sector, the PCU is supporting the sector in developing the draft sector gender strategy, Environment, Safety and Health Policy Statement, Agriculture Insurance Scheme and Agro-chemical management guidelines.

In addition ESSH tools have been developed and reviewed namely the environment and social screening tool, the ESSH monitoring tools, revised ESSH metrics incorporated in Procurement documents; ESSH Performance Evaluation scorecard for contractors, template of ESSH Plan attached to grant agreements, the ESSH reporting template, GRM guidelines, logbooks, registration forms, referral forms, minute forms. For effective reporting, all tools have been communicated to district environment and social safeguards focal person and capacities built on use. Additionally, E-GRM application is under development by M-Omulimisa.

Monitoring, Evaluation and Impact Evaluation

In an effort to support the collection of data, analysis and reporting on project implementation performance, activities for this subcomponent were focused on;

- i. Updating the project results framework
- ii. Impact Evaluation studies to evaluate the transformational impact of the project
- iii. Operationalization of the Project e-monitoring and evaluation system under the ACDP Management Information System
- iv. Preparation of project workplans and budgets
- v. Undertaking periodic performance reviews

In line with tracking of project performance to inform timely corrective decision-making, the project undertook its Baseline Survey in April 2019 and a Midterm Review and Process Evaluation in October 2020. The findings of these major surveys contributed towards decision making and outcome learning in the project.

Under routine monitoring and tracking of implementation, standardized online routine monitoring tools have been developed, digitized and deployed for data collection by Community Based Facilitators at district level. A total of 562 district officials received tablets and were trained on data collection using CAPI. These collect seasonal production data using tablet computers which is used to update the project Results Framework. The data is housed in the ACDP Management Information System which is under development.

Two specialized studies have been undertaken, these include

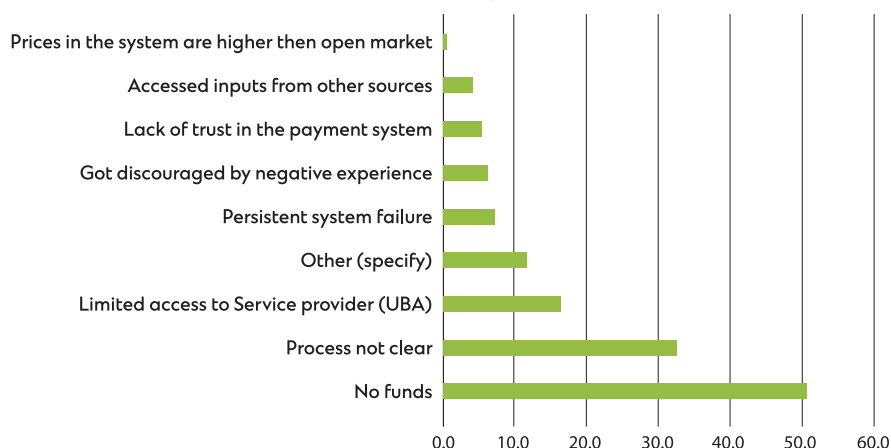
- i the ACDP cohort study to assess behaviours of project beneficiaries and identify reasons for non-ordering, non-redemption and non-progression and
- ii the Cassava Market Study which assessed the different markets for cassava and its products, with the aim of improving its marketability.

Reasons for non-ordering by farmers who enrol into the e-voucher system and never order inputs

Proportion of farmers who have ordered for inputs



Reasons for non-ordering





Lessons Learnt

1. Implementation of ACDP with the full participation of the farmers and the private sector has demonstrated that the mission of transforming farmers from subsistence to commercial agriculture is possible. Farmers/farmer organisation deal directly with genuine agro-input distributors and machinery distributors which has limited involvement of middlemen thus reducing the cost of transactions.
2. Due to the traceability mechanism inbuilt in the e-voucher systems, the quality of inputs delivered under the project in particular has greatly improved. This, coupled with increased adoption of use of improved technologies such as use of fertilizer, use of agro-chemicals, irrigated agriculture, among others, is drastically improving productivity among supported commodities.
3. Government has for long provided “free inputs” to farmers however to date 200,984 farmers under ACDP have demonstrated the ability to pay for inputs to a tune of UGX 27 billion. The requirement for farmers to co-fund is gradually instilling the ownership attitude and as such improving the management and handling of inputs delivered. The farmers now have the power to reject poor quality inputs and even demand for compensation from suppliers.
4. The project through the co-funding/matching grants is stimulating local savings among the beneficiary farmers for investment in agriculture commodity value chains as well support post-harvest and value addition community initiatives. The infrastructure and machines being acquired are not likely to become white elephants during and after the project as they are farmer owned.
5. The capacity building program of the project includes preparing business plans, business health checks, mindset change, farming as a business, core farmer organizations principles, access to market and financial linkages. Developing farmer’s entrepreneurship and agri-business development skills is certainly contributing to transforming to commercial agriculture.

IMPLEMENTATION CHALLENGES



Despite the successes registered so far, implementation is affected by a number of challenges and these include the following:

1. Delays in approval: The project was approved by the World Bank on March 16, 2015 but Parliament approval was secured 18 months later on September 15, 2016 and declared effective on January 23, 2017. As a result of the delays in approval, the project lost 21 months of the planned implementation period. This reduced the project implementation period from 6 to 4.3 years. The project closure date is set for March 2022.
2. Low retention of farmers in the subsidy scheme which is partly attributed to weak financial capacity of farmers to procure inputs, low access to credit coupled with limited time for farmers to sell and raise capital for the next season. This has affected farmer transition to cycles 2 & 3 where financial contribution is higher at 50% and 67% respectively. This has been made worse by the impact of COVID-19 pandemic.
3. Novelty of the e-voucher system requiring a lot of sensitization, training and a long learning period in order to facilitate adoption by target beneficiaries.
4. Weaknesses with the e-voucher system including network failures, poor connectivity and system instability. To beat the system, farmers enrol family members to stay at cycle 1 contribution (33%).
5. Weak farmer institutions. Furthermore, the weak governance and management of farmer groups has hindered access of credit from financial institutions.
6. Inadequate resources (human, equipment and transport) by the Department of Crop Inspection and Certification to facilitated enforcement of standards to eliminate counterfeit inputs at local levels.
7. Most of the agro-input dealers at that lower level lack the financial capacity to meet the demand for large quantities of inputs created by the project.
8. Existing of programs in the agriculture sector providing free inputs.

E-VOUCHER BENEFICIARIES AND VALUE OF INPUTS PER DISTRICT

District	Targeted Farmers	Beneficiary Farmer	% of Target	Farmer Contribution (UGX)	Government Subsidy (UGX)	Total cost (UGX)
AMURU	7,000	2,687	38	28,44,14,754	57,79,39,707	86,23,54,450
APAC	2,750	1,212	44	9,84,97,075	19,76,80,175	29,61,77,250
ARUA	3,000	182	6	1,81,39,977	3,63,69,927	5,45,09,900
BUGIRI	11,500	4,174	36	45,47,85,082	91,45,50,468	1,36,93,35,524
BUGWERI	7,500	6,500	87	78,04,66,646	1,58,25,14,188	2,36,29,80,574
BUKWO	18,000	3,395	19	43,94,64,363	88,98,42,643	1,32,93,07,000
BUNYANGABU	13,000	1,647	13	21,54,85,750	43,73,31,276	65,28,16,488
BUSHENYI	9,750	8,914	91	1,26,48,30,239	2,56,18,38,792	3,82,66,67,536
BUTALEJA	6,500	5,067	78	66,79,71,620	1,35,57,13,746	2,02,36,85,232
BUTEBO	1,800	426	24	4,74,09,659	9,61,07,612	14,35,17,270
DOKOLO	5,500	1,103	20	12,92,15,269	26,22,04,484	39,14,19,750
GULU	5,000	128	3	1,35,84,616	2,71,38,886	4,07,23,500
HOIMA	9,920	4,218	43	61,31,38,298	1,24,29,72,784	1,85,61,10,941
IGANGA	11,500	4,275	37	41,83,40,771	84,53,06,502	1,26,36,47,086
ISINGIRO	10,000	5,461	55	77,76,54,806	1,57,40,94,006	2,35,17,47,780
KABALE	9,750	8,141	83	1,22,83,55,253	2,49,30,64,222	3,72,14,19,105
KABAROLE	13,000	3,471	27	48,31,85,282	98,03,18,191	1,46,35,03,130
KAGADI	6,660	6,730	101	1,03,73,14,028	2,10,59,23,347	3,14,32,37,164
KAKUMIRO	8,100	8,634	107	1,34,07,52,771	2,72,21,34,551	4,06,28,86,876
KALUNGU	5,000	7,142	143	1,01,67,50,546	2,00,99,49,672	3,02,66,99,304
KAMWENGE	8,450	3,582	42	51,12,84,330	1,03,77,27,937	1,54,90,12,050
KAPCHORWA	18,000	5,482	30	74,72,17,550	1,51,53,51,616	2,26,25,69,090
KASESE	13,000	3,743	29	54,00,62,305	1,09,60,70,105	1,63,61,31,040
KASSANDA	7,200	5,555	77	78,39,99,630	1,58,76,55,670	2,37,16,55,197
KIBAALE	3,240	3,584	111	52,10,28,463	1,05,78,45,632	1,57,88,73,884
KIKUUBE	6,580	1,317	20	19,20,86,991	38,98,40,391	58,19,27,336
KIRYANDONGO	14,000	2,171	16	28,25,95,630	57,07,80,658	85,33,76,282
KITAGWENDA	4,550	1,820	40	26,82,05,578	54,45,38,453	81,27,43,750
KOLE	5,500	1,680	31	21,90,21,729	44,46,23,799	66,36,45,500
KUMI	2,000	2,152	108	28,54,67,032	57,87,98,853	86,42,65,650
KWANIA	2,750	540	20	6,26,48,260	12,60,82,740	18,87,31,000
KYEGEGWA	18,000	3,524	20	47,15,82,577	95,69,13,550	1,42,84,95,878
KYENJOJO	18,000	8,590	48	1,14,28,61,180	2,31,72,99,161	3,46,01,59,936
KYOTERA	6,000	10,722	179	1,52,68,44,127	3,08,69,47,260	4,61,37,89,618
LIRA	5,500	652	12	7,27,86,563	14,76,65,443	22,04,52,000
MADI OKOLLO	1,000	43	4	50,81,142	1,03,16,258	1,53,97,400
MARACHA	3,500	330	9	3,09,74,980	6,28,88,570	9,38,63,500
MASAKA	6,000	8,901	148	1,15,78,43,714	2,33,15,84,156	3,48,94,26,922
MASINDI	14,000	4,860	35	64,36,40,286	1,30,50,41,166	1,94,86,81,246
MBALE	22,000	5,919	27	74,98,68,662	1,52,15,78,851	2,27,14,47,512
MPIGI	7,000	3,230	46	41,81,60,492	83,73,24,530	1,25,54,84,952
MUBENDE	10,800	7,335	68	1,07,18,31,810	2,17,18,02,263	3,24,36,34,068
NAMUTUMBA	11,500	2,303	20	18,97,94,900	38,03,41,209	57,01,36,102
NEBBI	5,500	738	13	7,11,53,317	14,28,39,886	21,39,93,150
NTUNGAMO	8,000	6,480	81	90,38,20,416	1,82,76,29,136	2,73,14,49,000
NWOYA	5,500	1,237	22	13,47,68,042	27,30,55,868	40,78,23,900
OMORO	5,500	1,183	22	9,79,18,516	19,77,49,486	29,56,68,000
OYAM	5,500	1,537	28	14,67,79,545	29,79,14,220	44,46,93,750
PAKWACH	2,500	273	11	2,12,85,858	4,32,16,742	6,45,02,600
PALLISA	4,200	1,017	24	12,11,28,690	24,51,88,058	36,63,16,742
RAKAI	6,000	4,358	73	56,63,96,632	1,14,04,99,641	1,70,68,95,088
RUBANDA	9,750	5,308	54	77,31,98,370	1,56,96,02,589	2,34,28,00,350
RUKIGA	9,750	4,263	44	66,33,36,437	1,34,61,57,588	2,00,94,94,002
SERERE	2,000	962	48	13,43,12,767	27,25,07,073	40,68,19,840
SOROTI	2,000	489	24	6,94,25,070	14,09,53,930	21,03,79,000
TORORO	6,000	1,099	18	13,57,00,351	27,50,23,444	41,07,23,794
YUMBE	4,000	495	12	6,01,42,670	12,15,46,330	18,16,89,000
Total	4,50,000	2,00,984	45	27,12,44,54,224	54,88,67,96,474	82,01,12,35,829

MATCHING GRANTS BENEFICIARIES

Sub County	Parish	Grantee Name	Total Grant Amount (UGX)	MAAIF Award Ceiling	Grantee Cofinancing	Commodity supported
CLUSTER 1						
District: Kalungu						
Bukulula	Lusasa	Balandiza Kimeze Bukulula Farmers' Cooperative society	34,54,50,000	23,14,51,500	11,39,98,500	Coffee
Bukulula	Mabuye	Bukulula Coffee Farmers' Cooperative	32,27,17,500	21,62,20,725	10,64,96,775	Coffee
Kalungu	Bwasandeku	Bwasandeku Coffee Farmers' Cooperative Society Ltd	13,07,25,000	8,75,85,750	4,31,39,250	Coffee
Bukulula	Lusango	Lusango Coffee Farmers' Cooperative Society	26,77,50,000	17,93,92,500	8,83,57,500	Coffee
Lwabenge	Kiragga	Lwabenge Coffee Farmers' cooperative society	29,10,59,000	19,50,09,530	9,60,49,470	Coffee
Kyamulibwa T.C	Central Ward	Musenzealanda Growers cooperative society Ltd	26,00,00,000	17,42,00,000	8,58,00,000	Coffee
Kyamulibwa Rural Subcounty	Kigasa	Ngandanyingi Growers' Cooperative society Ltd	33,22,66,100	22,26,18,287	10,96,47,813	Coffee
Kalungu	Nabutongwa	Zambogo Farmers Group	29,84,00,000	19,99,28,000	9,84,72,000	Coffee
District: Rakai						
Byakabanda	Byakabanda	Gubamwoyo Development Association	35,75,00,000	23,95,25,000	11,79,75,000	Coffee
Kimuli	Kagamba	Kagamba Coffee Farmers Association	42,56,17,922	28,51,64,008	14,04,53,914	Coffee
Kyabigondo	Lwamaggwa	Kyabigondo Grain producers Cooperative society limited	39,32,25,000	26,34,60,750	12,97,64,250	Maize
Lwanda Tc	Lwanda	Lwanda Farmers' cooperative Society	29,13,00,000	19,51,71,000	9,61,29,000	Coffee
Nsimbo	Ddwaniro	Nsimbo Farmers and Traders Cooperative Society	42,36,22,000	28,38,26,740	13,97,95,260	Coffee
District: Mpigi						
Buwama	Mitala Maria	BOPA Cooperative Society Limited	35,24,15,279	23,61,18,237	11,62,97,042	Coffee
Nkozi	Muge	Buganga Tulibumu Development Cooperative Society Limited	42,50,85,604	28,48,07,354	14,02,78,249	Maize
Kituntu	Bukemba	Kitigiddembe Growers Cooperative Society Limited	24,30,43,500	16,28,39,145	8,02,04,355	Coffee
Kammengo	Kammengo	KOFA Cooperative Society Limited	26,25,00,000	17,58,75,000	8,66,25,000	Coffee
Mpigi Tc	Bumoozi	Mbugo Area Cooperative Society Ltd	42,10,37,500	28,20,95,125	13,89,42,375	Coffee
District: Kyotera						
Kabira	Ndolo	Abagalanyi Group	32,23,50,000	21,59,74,500	10,63,75,500	Coffee
Kasasa	Kabano	Community Initiative on Poverty Reduction(CIPR)	33,70,50,000	22,58,23,500	11,12,26,500	Coffee
Kasaali T.C	Kasaali	Comprehensive Programme For Community Empowerment	33,86,25,000	22,68,78,750	11,17,46,250	Coffee
Kalisizo	Kyango	Jjongoza Coffee farmers' cooperative society Ltd	25,51,50,000	17,09,50,500	8,41,99,500	Coffee
Kasasa	Mityebiri	Kasasa Farmers' Cooperative society	27,20,00,000	18,22,40,000	8,97,60,000	Coffee
Kakuuto	Kakuuto T.C	Kitasiba Farmers' Cooperative Society limited	26,77,50,000	17,93,92,500	8,83,57,500	Coffee
Kalisizo	Miti	Miti Farmer Field School	28,10,76,770	18,83,21,436	9,27,55,334	Coffee
Kasaali T.C	Teefe	Save the Community	40,63,50,000	27,22,54,500	13,40,95,500	Maize
District: Masaka						
Kabonera	Kyamulibwa T.C	Kabonera Coffee Farmers' Cooperative Society	24,88,92,000	16,67,57,640	8,21,34,360	Coffee
Kyanamukaaka	Buyinja	Kyanamukaaka Allied Coffee Farmers' cooperative society	31,82,55,000	21,32,30,850	10,50,24,150	Coffee
Kyanamukaaka	Kyantale	KyanamukaakaTusitikireWamu	19,21,54,655	12,87,43,619	6,34,11,036	Maize
Mukungwe	Bugabira	Bugabira farmer's group	41,54,94,468	27,83,81,294	13,71,13,174	Maize
Buwanga	Bulando	Bulando Mazanga Coffee Farmers	35,75,32,453	23,95,46,744	11,79,85,709	Coffee

Sub County	Parish	Grantee Name	Total Grant Amount (UGX)	MAAIF Award Ceiling	Grantee Cofinancing	Commodity supported
Kyanamukaka	Kyabazi	Bulungi Bwa Bavubuka youth Group	33,98,91,936	22,77,27,597	11,21,64,339	Coffee
Kyanamukaka	Mijunju	Ensi Kukola namirembe Group	35,31,58,415	23,66,16,138	11,65,42,277	Coffee
Buwunga	Nakateete	Ggulama Lions Group	35,49,58,415	23,78,22,138	11,71,36,277	Coffee
Buwunga	Nakiyaga	Kaka Coffee Farmers Cooperative Group	36,10,83,953	24,19,26,249	11,91,57,704	Coffee
kirumba	Katwe-Butego	Kirumba Development Association	40,50,46,527	27,13,81,173	13,36,65,354	Coffee
Luvule	Mukangwe	Kusa-Kumi Katwadde Multi-purpose Cooperative Society Limited	31,10,01,860	20,83,71,246	10,26,30,614	Coffee
Kyanjovu	Buwanga	Kyanamukaaka Twesitule Coffee Cooperative Society LTD	40,00,00,000	26,80,00,000	13,20,00,000	Coffee
Kasango	Kabonera	Kyanjovu Coffee Farmers cooperative Association	35,49,58,415	23,78,22,138	11,71,36,277	Coffee
Nkuuna	Kyanamukaka	Laviscopf Cooperative Society Ltd	33,99,73,499	22,77,82,244	11,21,91,255	Coffee
Luwaggule	Kyesiiga	Magezi Mugagga-Nkuuna Group	35,18,08,415	23,57,11,638	11,60,96,777	Coffee
Kanoni	Kyanamukaka	Ndeeba Traders and Farmers Organization	32,29,70,210	21,63,90,041	10,65,80,169	Coffee
Bugabira	Mukungwe	St. kizito Mother's Group	33,88,50,130	22,70,29,587	11,18,20,543	Coffee
Takajjunge	Kabonera	Takajjunge Coffee Farmers Group	31,88,25,946	21,36,13,384	10,52,12,562	Coffee
Kyanamukaaka	Kyanamukaka	Walyogambotya Growers Cooperative Society Ltd	31,88,25,946	21,36,13,384	10,52,12,562	Coffee
Kanywa	Mukungwe	West Buganda Coperative Union Limited	41,00,10,673	27,47,07,151	13,53,03,522	Coffee
District: Mpigi						
Kituntu	Kasozi	Kitakyusa Cooperative Society Ltd	41,00,00,000	27,47,00,000	13,53,00,000	Coffee
Muduuma	Malima	Kisitu Village saving and Loan Association	41,00,00,000	27,47,00,000	13,53,00,000	Coffee
Buwama T.C	Lubugumu	Kkumbya Cooperative Society Ltd	29,51,13,125	19,77,25,794	9,73,87,331	Coffee
Muduuma	Malima	Kasabo Environmental Farmers Group	41,00,00,000	27,47,00,000	13,53,00,000	Coffee
Kirigente	Kikondo	Mabanga Akwata Empola growers Cooperative Society limited	41,00,00,000	27,47,00,000	13,53,00,000	Coffee
Mpigi Tc	Bwama	Mpigi District Farmers' Association	41,00,00,000	27,47,00,000	13,53,00,000	Coffee
Mpigi T.C	Ward A	Mutubagumu Mpigi Farmer's Cooperative Society Ltd	41,00,00,000	27,47,00,000	13,53,00,000	Coffee
Kirigente	Kikondo	Nakirebe Bajja Growers Cooperative Society Ltd	41,00,00,000	27,47,00,000	13,53,00,000	Maize
Mpigi T.C	Kyali Ward	Tukolerewamu Cooperative Society limited	41,00,00,000	27,47,00,000	13,53,00,000	Maize
CLUSTER 2						
District: Bugiri						
Bidhaya	Bukooli Central	Budhaya Farmers and Marketing Cooperative Society Limited	26,38,76,660	17,67,97,362	8,70,79,298	Maize
Nankoma	Nankoma Tc	Bugiri Agri-business Institutions Development Association(BAIDA)	40,35,57,000	27,03,83,190	13,31,73,810	Maize
Bugiri Tc	Bugiri	Bugiri District Farmers Association	42,00,00,000	28,14,00,000	13,86,00,000	Maize
Buwunga	Magoola	Bugiri District Intergrated Farmers and Agribusiness Association	41,60,00,000	27,87,20,000	13,72,80,000	Maize
Buluguyi	Muwayo	Buluguyi Rice & Maize Farmers' Cooperative Society Limited	30,97,67,400	20,75,44,158	10,22,23,242	Maize
Buwunga	Busowa Tc	Busowa Traders and Farmers' Cooperative Society	22,78,50,000	15,26,59,500	7,51,90,500	Rice
Nabukalu	Namubuka Tc	Kasita Kyowola Omwavu Growers Cooperative Society Ltd	27,93,72,029	18,71,79,259	9,21,92,770	Maize
Buwunga	Kiteigalwa	Kiteigalwa Rice Farmers' & Marketing Cooperative	26,87,46,660	18,00,60,262	8,86,86,398	Rice
Bulidha	Nabigingo	Nabigingo SACCO Ltd	21,57,73,320	14,45,68,124	7,12,05,196	Maize
District: Namatumba						
Bugobi	Townside	Bugobi Town Council Akanabala Oil seed Farmers Area Cooperative Enterprise Ltd	31,29,00,000	20,96,43,000	10,32,57,000	Rice

Sub County	Parish	Grantee Name	Total Grant Amount (UGX)	MAAIF Award Ceiling	Grantee Cofinancing	Commodity supported
Bugobi	Bugobi	Bugobi-Bukenga Town Council Farmers and Traders Cooperative Society Ltd	38,77,02,000	25,97,60,340	12,79,41,660	Maize
Bulange	Buwaga	Buwaga Alibaawo Produce cooperative society Limited	27,11,25,000	18,16,53,750	8,94,71,250	Rice
Nabweyo	Mpulira	Kyosiga Kyokungula Farmers' Group	32,60,00,000	21,84,20,000	10,75,80,000	Rice
Kibaale	Namakoko	Kyossiga Farmers Association	26,72,40,000	17,90,50,800	8,81,89,200	Maize
Magada	Magada	Magada Multi-farmers' Association	31,56,30,000	21,14,72,100	10,41,57,900	Maize
Nsinze	Buwogo	Maliga Environmental Protection	25,04,00,000	16,77,68,000	8,26,32,000	Maize
Mazuba	Kagaire	Mulemba AgaliAwamu Womens Farmers Association	20,16,00,000	13,50,72,000	6,65,28,000	Maize
Nsinze	Nakalokwe	Nakalokwe Young Farmers Association	40,77,77,000	27,32,10,590	13,45,66,410	Maize
Namutumba	Central Ward	Namutumba Situka Tutambule Farmers' Development Association	40,77,77,000	27,32,10,590	13,45,66,410	Maize
District: Iganga						
Nakigo	Nakigo	Nakisenhe Adult Literacy Association	39,98,60,000	26,79,06,200	13,19,53,800	Maize
Nambale	Nambale	Nambale Agribusiness Cooperative Enterprise Ltd	34,39,98,725	23,04,79,146	11,35,19,579	Maize
Nawandala	Bugongo	Nawandala Intergrated Farmers Coooperative Society Ltd	32,95,31,000	22,07,85,770	10,87,45,230	Maize
Bulamaji	Iwawu	Together We Can Foundation	40,29,61,890	26,99,84,466	13,29,77,424	Maize
District: Bugweri						
Namalemba	Idinda	AgaliAwamu Multi-purpose Association	25,11,25,000	16,82,53,750	8,28,71,250	Rice
Igombe	Kikunyu	Bubonghe Kwagala Village Savings and Credit Association and IgombeSubcountyTeachers' SACCO	24,89,33,475	16,67,85,428	8,21,48,047	Maize
Bugweri Tc	Ibako	Bugweri Maize Farmers and Allied Input dealers Cooperative Society Ltd	36,35,52,000	24,35,79,840	11,99,72,160	Maize
Buyanga	Bulunguli	Bulunguli Farmers Multi-purpose Cooperative	23,80,69,500	15,95,06,565	7,85,62,935	Maize
Makandwa Central	Makandwa	Makandwa Business & Farmers Association	27,96,17,250	18,73,43,558	9,22,73,693	Maize
District: Bugiri						
Bulesa	Buwuni	Buwuni intergrated Farmers' Association	41,65,00,000	27,90,55,000	13,74,45,000	Maize
District: Bugweri						
Makuutu	Bukose	Bukose Balibona Biwoire Cooperative Society	40,96,20,000	27,44,45,400	13,51,74,600	Maize
Buyanga	Buwoya	Buyanga- Bugweri Local Council Leaders Cooperative Society Limited	40,63,05,000	27,22,24,350	13,40,80,650	Maize
Namalemba	Minani	Naigombwa Abanda Growers Cooperative Society	40,95,90,000	27,44,25,300	13,51,64,700	Maize
Igombe	Businda	Nakivumbi Elderly Farmers Association	40,67,00,000	27,24,89,000	13,42,11,000	Maize
District: Iganga						
Iganga TC	Nakisenyi	Bukawa Area marketing Enterprise Cooperative Society Ltd	42,00,00,000	28,14,00,000	13,86,00,000	Maize
Nakigo	Bulubandi	Bulubandi farmers and Agro-Processing Association	41,00,00,000	27,47,00,000	13,53,00,000	Maize
Iganga TC	Nakigo Rd	Iganga District farmers Association	41,00,00,000	27,47,00,000	13,53,00,000	Maize
Nakalama	Nakalama	Kwagala mothers Union	40,00,00,000	26,80,00,000	13,20,00,000	Maize
Nakigo	Busowobi	Nabitovu Rice Farmer's Coopreative Society Ltd	41,00,00,000	27,47,00,000	13,53,00,000	Maize
Nawanyingi	nawanyingi	Nawankonge Balitwengoba Burial, Savings and Credit Association	40,00,00,000	26,80,00,000	13,20,00,000	Maize
Nawanyingi	Magogo	Nawanyingi Integrated Grain Farmers Cooperative Society Limited	41,00,00,000	27,47,00,000	13,53,00,000	Rice
Nakigo	Kabira	Nawanzu SACCO and Credit Cooperative Society Ltd	41,00,00,000	27,47,00,000	13,53,00,000	Maize

Sub County	Parish	Grantee Name	Total Grant Amount (UGX)	MAAIF Award Ceiling	Grantee Cofinancing	Commodity supported
CLUSTER 3						
District: Tororo						
Kisoko	Gwaragwara	Community Child Care Initiative	23,58,20,895	15,80,00,000	7,78,20,895	Rice
Kwapa	Kwapa	Delivarence Church Ochegeen	23,58,20,895	15,80,00,000	7,78,20,895	Maize
Mirikit	Mirikit	Merikit Progressive Farmers Association	29,85,07,463	20,00,00,000	9,85,07,463	Rice
Sopsop	Namwendwa	Naweyo United Farmers Group	23,58,20,895	15,80,00,000	7,78,20,895	Rice
Kayoro	Kayoro	Osukuru United Women's network	23,58,20,895	15,80,00,000	7,78,20,895	Cassava
Butebo						
Butebo	Butebo	Butebo Veterans Farmers Association	41,79,10,448	28,00,00,000	13,79,10,448	Maize
Butebo	Butebo	Kiruruma Cassava Growers	41,79,10,448	28,00,00,000	13,79,10,448	Cassava
District: Butaleja						
Mazimasa	Muyagu	Doho irrigation Scheme Farmers' Co-operative Society Limited	37,31,34,328	25,00,00,000	12,31,34,328	Rice
Naweyo	Kayiti	Naweyo Namatala Rice Growers Cooperative Society Limited	37,31,34,328	25,00,00,000	12,31,34,328	Rice
Naweyo	Kayiti	Naweyo Namatala Rice Growers Cooperative Society Limited	37,31,34,328	25,00,00,000	12,31,34,328	Rice
District: Pallisa						
Agule	Agule	Agule Development savings and Credit Group	41,79,10,448	28,00,00,000	13,79,10,448	Rice
Putiputi	Limoto	Charisma Farmers' Association	22,38,80,597	15,00,00,000	7,38,80,597	Maize
Agule	Chelekura	Chelekura Community Integrated Group	41,79,10,448	28,00,00,000	13,79,10,448	Cassava
Pallisa	Akadot	Komolo-Akadot United Maize Farmers Cooperatives	41,79,10,448	28,00,00,000	13,79,10,448	Maize
Putiputi	Limoto	Limoto Farmers' Cooperative	41,79,10,448	28,00,00,000	13,79,10,448	Maize
Kameke	Kameke	Oboliso Komolo Farmer's Association	26,86,56,716	18,00,00,000	8,86,56,716	Maize
CLUSTER 4						
District: Kapchorwa						
Chema		Chema Integrated Farmers Association	29,85,07,463	20,00,00,000	9,85,07,463	Coffee
Chema	Kapmworyomo	Kapmworyomo Yap Men and Women	29,85,07,463	20,00,00,000	9,85,07,463	Maize
Kaptanya	Tumboboi	Kaptanya Multipurpose Development Association (Kamuda)	29,85,07,463	20,00,00,000	9,85,07,463	Maize
Kaserem	Kaserem	Kaserem Area Cooperative Marketing Enterprise Limited (Kace)	29,85,07,463	20,00,00,000	9,85,07,463	Maize
Munarya	Chebonet	Munarya Maize Millers	29,85,07,463	20,00,00,000	9,85,07,463	Maize
Narya	Kapchesoy	Sipi Organic Produce	29,85,07,463	20,00,00,000	9,85,07,463	Coffee
District: Bukwo						
		Chepkwasta Coop and Credit Soc	32,68,65,672	21,90,00,000	10,78,65,672	Maize
Bukwo	Amang	Kamba SACCO	32,68,65,672	21,90,00,000	10,78,65,672	Maize
Bukwo	Bukwo	Kapkoros Environmental Protection Of Water Catchment Areas Association (KEPWA)	32,68,65,672	21,90,00,000	10,78,65,672	Maize
Tulel	Tulel	Masasha Sacco Business Plan	32,68,65,672	21,90,00,000	10,78,65,672	Maize
Bukuwo	Torasis	Safina SACCO	32,68,65,672	21,90,00,000	10,78,65,672	Maize
District: Mbale						
		Bamasikye Spark	24,62,68,657	16,50,00,000	8,12,68,657	Coffee
		Busoba Rural Farmers Association.	29,85,07,463	20,00,00,000	9,85,07,463	Maize
Bamasikye	Bamasikye	Maaka Timilila Coop Sco.	24,62,68,657	16,50,00,000	8,12,68,657	Maize
Bubyangy	Bunawozi	Mt Elgon Organic Farmers	29,85,07,463	20,00,00,000	9,85,07,463	Coffee
Industrial Division	South Central	Mount Elgon Coffee And Honey Cooperative Ltd.	24,62,68,657	16,50,00,000	8,12,68,657	Coffee
Nkoma	Namanyonyi	Namanyonyi Farmers' Cooperative Society	29,85,07,463	20,00,00,000	9,85,07,463	Maize

Sub County	Parish	Grantee Name	Total Grant Amount (UGX)	MAAIF Award Ceiling	Grantee Cofinancing	Commodity supported
CLUSTER 5						
District: Serere						
Kateta	Serere	Agurur A Cassava Growers Group	26,76,09,116	17,92,98,108	8,83,11,008	Cassava
Olio	Osuguro	Aojakum Rice Farmers Group	26,86,56,717	18,00,00,000	8,86,56,717	Rice
Atiira	Atiira	Atiira farmer's Cooperative Society	26,86,56,717	18,00,00,000	8,86,56,717	Rice
Kyere	Kamulojo	Kamuroja Growers Cooperative Society Ltd.	31,34,33,916	21,00,00,724	10,34,33,192	Rice
Odapakol	Pingire	Odapakol Grains Producers and Marketing Women Association	21,98,70,000	14,73,12,900	7,25,57,100	Rice
District: Soroti						
Gweri	Awaliwal	Amuru Amoroto Multipurpose Cooperative Society Ltd. (AAMCOS)	22,98,41,000	15,39,93,470	7,58,47,530	Cassava
Gweri	Awoja	Awoja Rural Producers Organization	22,98,50,000	15,39,99,500	7,58,50,500	Cassava
Arapai	Amoru	Community Link for Development Organization	22,98,50,747	15,40,00,000	7,58,50,747	Cassava
Soroti	Ameu	Teso Cooperative Union Ltd.	41,68,60,970	27,92,96,850	13,75,64,120	Cassava
District: Kumi						
Ongino	Kachaboi	Kachaboi Development SACCO Ltd.	22,33,20,895	14,96,25,000	7,36,95,895	Cassava
Kanyum	Kanyum	Koceger Farmers' Group Savings and Credit	22,38,80,597	15,00,00,000	7,38,80,597	Rice
Mukongoro	Mukongoro	Mukongoro Area Cooperative Ltd.	22,38,80,597	15,00,00,000	7,38,80,597	Cassava
Nyero	Kameya	Okanyapuro Farmers Group	22,33,20,896	14,96,25,000	7,36,95,896	Rice
Ongino	Kanapa	Oturukuku Produce Dealer Farmers Association	21,43,88,059	14,36,40,000	7,07,48,059	Rice
CLUSTER 6						
District: Amuru						
Lamogi	Keyo	Adept Agribusiness Development	32,28,13,400	21,62,84,978	10,65,28,422	Rice
Pagak	Amoyokoma Ward	Amuru Tek Livestock Investment Millers Cooperative Society	22,87,36,090	15,32,53,180	7,54,82,910	Rice
Atiak T/C	Pawel	Atiak Tropical Honey Cooperative Society Ltd	34,48,24,800	23,10,32,616	11,37,92,184	Rice
Kilak	Pawel	Onen Can Youth Group	20,05,50,000	13,43,68,500	6,61,81,500	Rice
Atiak	Palukere	Palukere Growers Cooperative Society Limited	26,04,00,000	17,44,68,000	8,59,32,000	Rice
District: Gulu						
Aswa	Gwengdiya	Gwengdiya Growers Cooperative Society Ltd	16,82,93,000	11,27,56,310	5,55,36,690	Rice
Bungatira	Agonga	Latyeng Farmers Group	15,00,00,000	10,05,00,000	4,95,00,000	Beans
Paicho	Klaumu	PurBer Cooperative Society	16,72,95,360	11,20,87,891	5,52,07,469	Rice
Gulu M/C	Layibi	West Acholi Cooperative Union Ltd	16,84,00,000	11,28,28,000	5,55,72,000	Beans
District: Nwoya						
Koch Goma	Kal	Koch Goma Cooperative Savings and Credit Society Limited	25,26,00,189	16,92,42,127	8,33,58,062	Rice
Alero	Bwobonam B	Nwoya Cassava and Rice Growers Cooperative Society Limited	25,37,80,000	17,00,32,600	8,37,47,400	Rice
Purongo	Pabit	St. Mary's Development Cooperative Society	20,85,29,033	13,97,14,452	6,88,14,581	Rice
Anaka T/C		Waloko Kwoo Farmers Group	31,59,19,000	21,16,65,730	10,42,53,270	Rice
Lungulu	Lebngec	West Acholi Cooperative Union Limited	25,75,18,750	17,25,37,563	8,49,81,188	Rice
District: Omoro						
Lakwana	Lujongole	Faith with Action Farmers Group	22,15,50,000	14,84,38,500	7,31,11,500	Beans
Bobo	Paidwe	Kulu Otit United Farmers' Cooperative Society	20,25,30,000	13,56,95,100	6,68,34,900	Rice
Ongako	Onyona	Ongako United Block farmers Group	23,21,89,000	15,55,66,630	7,66,22,370	Beans
Ongako	Abwoch	Waribu Cingwa Goya Women's Group	16,57,00,000	11,10,19,000	5,46,81,000	Beans
District: Amuru						
Lamogi	Pakiri	Amuru District Farmer's Association	33,00,00,000	22,11,00,000	10,89,00,000	Beans
Lamogi	Agwayugi	Amuru Progressive Farmer's Cooperative Society Ltd	32,00,00,000	21,44,00,000	10,56,00,000	Rice

Sub County	Parish	Grantee Name	Total Grant Amount (UGX)	MAAIF Award Ceiling	Grantee Cofinancing	Commodity supported
Amuru TC	Owee Ward	Dii Cwinyi Farmer's and village Savings and Loan Association	19,70,00,000	13,19,90,000	6,50,10,000	Rice
Elegu	Amuru	Elegu Women's Crossborder trader's Cooperative society	35,00,00,000	23,45,00,000	11,55,00,000	Rice
Amuru	Okungedi	Kuc Ber Farmer's Group	15,00,00,000	10,05,00,000	4,95,00,000	Rice
Amuru	Pailyee	Ojigu Cooperative Farmer's Society	38,54,57,974	25,82,56,843	12,72,01,131	Maize
Lamogi	Kilak South	Otici Coffee Growers Association	22,40,00,000	15,00,80,000	7,39,20,000	Coffee
Atiak	Kal	Papuwonya Out Grower Cooperative society	35,00,00,000	23,45,00,000	11,55,00,000	Rice
Amuru	Pagak	Patopa Cooperative Society	28,40,00,000	19,02,80,000	9,37,20,000	Rice
Abong dyang	Pogi	Waribu pit Farmer's Group	20,00,00,000	13,40,00,000	6,60,00,000	Rice
Amuru	Pabbo	Pabbo Rice Cooperative Society Ltd	34,50,00,000	23,11,50,000	11,38,50,000	Rice
District: Gulu						
Paicho	Kal Ali	Paicho central Kal Growers Cooperative Society Limited	38,66,20,500	25,90,35,735	12,75,84,765	Rice
Nwoya						
Purongo	Patira West	Alok Ki Winyo Mixed Farm	41,00,79,596	27,47,53,329	13,53,26,267	Rice
Anaka	Pabali	Anaka Sub-county Women's Group	16,28,40,000	10,91,02,800	5,37,37,200	Rice
Alero	Kal	Obanen Farmer's Development Association	36,00,99,285	24,12,66,521	11,88,32,764	Rice
Anaka TC	Ceke	Ling Pe Ming Agribusiness Group	40,95,00,000	27,43,65,000	13,51,35,000	Rice
Anaka	Todora	Nwoya Integrated Farmers and Agribusiness Association	42,52,50,000	28,49,17,500	14,03,32,500	Rice
District: Omoro						
		Pur Ber Farmers Group	40,34,48,958	27,03,10,802	13,31,38,156	
CLUSTER 7						
District: Apac						
Chegere	Kidilani	Abulumogo Maize Farmers SAACO	22,68,00,000	15,19,56,000	7,48,44,000	Bean
Akokolo	Akokolo	Aluga Women FG	22,68,00,000	15,19,56,000	7,48,44,000	Cassava
Apac	Abedi	Mara Atwero Farmers Group	22,68,00,000	15,19,56,000	7,48,44,000	Cassava
Arocha	Adok	Orib Cing Women Farmers Group	22,68,00,000	15,19,56,000	7,48,44,000	Cassava
Ibuje	Alenga	Rwot Atwero Farmers' VSLA	22,68,00,000	15,19,56,000	7,48,44,000	Cassava
District: Lira						
Agali	Ocamonyang	Agali Farmers' Cooperative Society Ltd	29,85,07,085	19,99,99,747	9,85,07,338	Cassava
Lira	Barapwo	Can Apoto Atura	29,84,96,193	19,99,92,449	9,85,03,744	Cassava
Ibuje	Alenga North	Rwot Atwero Farmers' VSLA	29,84,12,323	19,99,36,256	9,84,76,067	Cassava
Amach	Amokooge	Wiodyek Oilseed Area Farmers Cooperative Enterprises	29,85,04,986	19,99,98,341	9,85,06,645	Cassava
District: Kwania						
Inomo	Inomo	Can Dag Alyera Farmers' Cooperative Ltd	28,35,43,628	18,99,74,231	9,35,69,397	Bean
Obongomola	Akali	Odolo Amido Cooperative Society Ltd	28,33,21,642	18,98,25,500	9,34,96,142	Bean
Amac	Aduku T.C	Plant And Health Cooperative Society Ltd	28,33,21,684	18,98,25,528	9,34,96,156	Bean
Chawente	Ajar	Teopok Dairy And Livestock Cooperative	28,39,67,582	19,02,58,280	9,37,09,302	Cassava
District: Kole						
Akalo	Adyeda	Akalo Producers Cooperative Society Ltd	24,56,52,985	16,45,87,500	8,10,65,485	Cassava
Okwerodot	Lwala	Alito Joint Farmers Multipurpose Cooperative Ltd	24,56,52,986	16,45,87,501	8,10,65,485	Cassava
Ayer	Telela	Ayer Joint Youth Farmers Society	24,61,21,568	16,49,01,451	8,12,20,117	Cassava
Bala	Eastern Ward B	Bala Young Farmers Cooperative Ltd	24,11,86,567	16,15,95,000	7,95,91,567	Cassava
Aboke	Opeta	Opeta United Cooperative Society Ltd	24,41,64,180	16,35,90,001	8,05,74,179	Cassava
District: Oyam						
Aber	Wirao	Aber Community Cooperative Society Ltd	22,29,00,896	14,93,43,600	7,35,57,296	Rice
Aleka	Alibi	Alibi United Farmers Group	22,37,40,896	14,99,06,400	7,38,34,496	Cassava

Sub County	Parish	Grantee Name	Total Grant Amount (UGX)	MAAIF Award Ceiling	Grantee Cofinancing	Commodity supported
Loro	Alutkot	Loro Coffee Growers Cooperative Society Ltd	29,85,06,693	19,99,99,484	9,85,07,209	Coffee
Otwal	Okii	Okii Oil Seeds and Marketing Cooperative	18,05,96,850	12,09,99,890	5,95,96,961	Cassava
Iceme	Angu	Oyam District Farmers Association	29,86,06,693	20,00,66,484	9,85,40,209	Cassava
District: Dokolo						
Dokolo Town Council	Central Ward	Dokolo Agribusiness Farmers Association	32,84,56,000	22,00,65,520	10,83,90,480	Cassava
Agwata	Tetugo	Dokolo Agwata Rice Farmers Cooperative Society Ltd	18,93,15,000	12,68,41,050	6,24,73,950	Rice
Amwoma	Amwoma	Dokolo Ayemedo Ngeca Local Seed Growers Cooperative	18,94,20,000	12,69,11,400	6,25,08,600	Cassava
Kangai	Chwagere	Dokolo West Farmers' Cooperative Ltd	18,94,72,500	12,69,46,575	6,25,25,925	Cassava
Dokolo	Adagmon	Dokolo Young Oilseed Farmers' Cooperative Ltd	32,83,35,000	21,99,84,450	10,83,50,550	Cassava
CLUSTER 8						
District: Kabarole						
Karangura	Nyakitokoli	Karangura Peak Modern Coffee Farmers Cooperative Society	38,11,50,000	25,53,70,500	12,57,79,500	Coffee
Kasenda T.C	Rwankenzi	Kasenda youth Farmers Association	23,95,68,000	16,05,10,560	7,90,57,440	Maize
Karangura	Kazingo	Kazingo United Traders Association (KUTA)	41,58,00,000	27,85,86,000	13,72,14,000	Coffee
Mudusu	Nyabuswa	Nyabuswa Coffee Farmers Association (NCOFA)	41,49,60,000	27,80,23,200	13,69,36,800	Coffee
District: Kamwenge						
		Kabambiro Progressive Farmers	24,11,86,567	16,15,95,000	7,95,91,567	Maize
Kamwenge TC	Kamwenge	Kamwenge Tukorlerehamwe Area Cooperative Enterprise	40,97,28,060	27,45,17,800	13,52,10,260	Maize
Kamwenge TC	Masaka	Masaka Ward Bataaka Kweyamba coop. society	24,17,91,045	16,20,00,000	7,97,91,045	Maize
Nkoma	Bisozi	Nkoma Area Cooperative	40,84,65,672	27,36,72,000	13,47,93,672	Maize
District: Bunyangabu						
Rwimi TC	Rwimi Central	Balema Kweyamba	21,34,32,836	14,30,00,000	7,04,32,836	Maize
Kabonera	Nyamba	Kabonero Mountainous Coffee Grower's Cooperative	25,72,39,500	17,23,50,465	8,48,89,035	Coffee
Katebwa	Katebwa	Kiboota Katebwa Coffee Farmers Association	25,30,50,000	16,95,43,500	8,35,06,500	Coffee
Kasese						
Kyarumba	Kyarumba	Buthane Babughirana Cooperative	37,31,34,328	25,00,00,000	12,31,34,328	
Rwimi TC	Rwimi Central	Kyaburangira farmers Savings	36,84,61,827	24,68,69,424	12,15,92,403	
Kisinga	Kagondo	Kiburara Quality Millers	22,38,80,597	15,00,00,000	7,38,80,597	Maize
Mahango	Luhiri	Luhiri Coffee Farmers Cooperative society	27,76,11,940	18,60,00,000	9,16,11,940	Coffee
		Nyamirami Cooperative Savings and Credit Society	22,12,55,597	14,82,41,250	7,30,14,347	Coffee
District: Kitagwenda						
		Bukurungo Farmers Co-Operative Society Limited	22,38,80,597	15,00,00,000	7,38,80,597	Maize
Mahyoro	Kyandangara	Kyandangara Area Coperative Enterprise	29,85,07,463	20,00,00,000	9,85,07,463	Maize
		Nshanju Tweyombekye	32,03,97,000	21,46,65,990	10,57,31,010	coffee
		Ntara Produce Cooperative Society	22,38,80,597	15,00,00,000	7,38,80,597	coffee
Mahyoro	Bubare	The John Charity Foundation	14,62,68,657	9,80,00,000	4,82,68,657	Maize
CLUSTER 9						
District: Kibale						
Bubango	Bubango	Kibaale Saemuel Undongo Coop	22,99,50,000	15,40,66,500	7,58,83,500	Maize
Kyembando	kisaalizi	Kyebando Twesiime SACCO	22,99,50,000	15,40,66,500	7,58,83,500	Maize

Sub County	Parish	Grantee Name	Total Grant Amount (UGX)	MAAIF Award Ceiling	Grantee Cofinancing	Commodity supported
Mugarama	Mugarama	Mugarama Coffee Growers and Produce Cooperative	23,05,90,218	15,44,95,446	7,60,94,772	Maize
Mugarama	Kezimbira	Mugarama Tugende Mumaso	22,92,76,105	15,36,14,990	7,56,61,115	Maize
Nyamarunda	Nyamarunda	Nyamarunda United Traders Cooperative Society Limited	22,92,76,105	15,36,14,990	7,56,61,115	Maize
District: Kyenjonjo						
Kyarusozi T/C	Nyakitojo Ward	Kyarusozi Intergrated Development Cooperative Limited	29,85,07,463	20,00,00,000	9,85,07,463	Coffee
Kihuura	Matiri	Matiri Kihura Sub county Coffee Farmers Co. LTD	22,38,80,597	15,00,00,000	7,38,80,597	Maize
Butunduzi T/C	Nykatoma	Nykatoma Butuduzi S/C Maize Farmers and Produce Marketing Cooperative Society Limited	29,85,07,463	20,00,00,000	9,85,07,463	Maize
Mabiira T/C	Haikona Ward	Nyankwanzi Multi-purpose Cooperative Society	29,85,07,463	20,00,00,000	9,85,07,463	Coffee
Butunduzi T/C	Rwibaale Ward	Rwibaale Farmers Marketing Cooperative Society	29,85,07,463	20,00,00,000	9,85,07,463	Maize
District: Kakumiro						
Birembo S/C	Kyakarongo	Birembo Producer & Marketing Cooperative	27,91,04,478	18,70,00,000	9,21,04,478	Maize
Kakumiro T/C	Kabworo Ward	Kakumiro Development Association	19,40,29,851	13,00,00,000	6,40,29,851	Coffee
Kasiita T/C	Kasiita Central	Kisiita Agro processors & Confectionaries Cooperative Limited	27,91,04,478	18,70,00,000	9,21,04,478	Maize
Birembo	Nyansimbi	Mujungu Farmers Group	27,91,04,478	18,70,00,000	9,21,04,478	Coffee
Nkooko T/C	Nkooko Ward	Nkooko Kakumiro Farmers & Traders co.ltd	27,91,04,478	18,70,00,000	9,21,04,478	Maize
District: Mubende						
Lubimbiri	Lubimbiri	Kamabale Farmers Group	22,38,80,597	15,00,00,000	7,38,80,597	Maize
Kigando	Lusiba	Kanyogoga Kagando Farmers' Cooperative	20,44,77,612	13,70,00,000	6,74,77,612	Maize
Kasambya	Kabbo	Kawanga Kweyamba Growers Cooperative Society	22,38,80,597	15,00,00,000	7,38,80,597	Coffee
Kitenga	Kagoma	Kitenge Agali Awamu Coffee Farmer Cooperative	37,31,34,328	25,00,00,000	12,31,34,328	Coffee
Madudu	Kabulamuriro	Madudu Twegatte Maize Farmers' Cooperative Society Ltd	37,31,34,328	25,00,00,000	12,31,34,328	Maize
District: Kagadi						
Kagadi TC	Kagadi Ikuma	Kagadi United Farmers	25,22,38,806	16,90,00,000	8,32,38,806	Maize
Bwikara	Mairurwe	Kayanja Mutima Gumu Association	25,22,38,806	16,90,00,000	8,32,38,806	Maize
Muhoro T/C	Kisweeka	Muhoro Area Cooperative	25,22,38,806	16,90,00,000	8,32,38,806	Maize
Rugashari	Izahuura	Rugashaire Cooperative Society Ltd	25,22,38,806	16,90,00,000	8,32,38,806	Maize
Pachwa	Kabasara	Rwenjobe Farmers Cop	25,22,38,806	16,90,00,000	8,32,38,806	Maize
District: Kyegewa						
Ruyonza	Kijongobya	Akoma Produce & Marketing group	22,38,80,597	15,00,00,000	7,38,80,597	Maize
Kasule S/C	Kasule Ward	Abagahe- Basigy Coperative Society Limited	22,17,80,597	14,85,93,000	7,31,87,597	Maize
Kasule S/C	Kasule Ward	Kasure Coffee Famers' group	26,86,56,717	18,00,00,000	8,86,56,717	Coffee
Kyegegwa S/C	Kyegegwa T/C	Kyegegwa Cassava Growers and Producers Marketing Group	29,72,04,938	19,91,27,308	9,80,77,630	Coffee
Kyegegwa S/C	Kibuye	Kyegegwa District Produce and Marketing Cooperative Society Limited	25,08,60,750	16,80,76,703	8,27,84,048	Maize
Kyegegwa T/C	Kyegegwa Ward	Kyegegwa Tweheyo Savings And Credit Cooperative Society Ltd	29,85,07,463	20,00,00,000	9,85,07,463	Maize
District: Kassanda						
Bukuya	Bukuya	Bukuya United Cooperative Society	31,71,00,000	21,24,57,000	10,46,43,000	Coffee
Kalwana	Kikandwa	Kalwana Rural Development Sacco	20,89,50,000	13,99,96,500	6,89,53,500	Coffee
Kassanda	Namabale	Kassanda Kwegatta Growers Cooperative	24,67,50,000	16,53,22,500	8,14,27,500	Coffee
Kassanda TC	Namalinga	Kassanda Maize Millers Cooperative Society Limited	22,45,49,000	15,04,47,830	7,41,01,170	Maize

Sub County	Parish	Grantee Name	Total Grant Amount (UGX)	MAAIF Award Ceiling	Grantee Cofinancing	Commodity supported
Myanzi	Myanzi	Myanzi Coffee Farmers Society Cooperative Limited	31,31,10,000	20,97,83,700	10,33,26,300	Coffee

CLUSTER 10

District: Kikuube

Buhimba		Banyankole Tweyambe Association (BATA)	22,33,21,350	14,96,25,305	7,36,96,046	Maize
Kikuube TC	Bulimya	Bunyoro Turihamu Group	26,88,00,000	18,00,96,000	8,87,04,000	Maize
Kyanwali	Kyanwali	Kyangwali Farmers Organisation	22,27,37,000	14,92,33,790	7,35,03,210	Maize
Kabwoya S/C		Twimuke Silca Association	26,93,25,000	18,04,47,750	8,88,77,250	Maize
Kiziranfumbi		Wambabya Community Development Cooperative Society	26,93,25,000	18,04,47,750	8,88,77,250	Maize

District: Kiryandongo

Kigumba TC		Kigumba Produce Buyers and Dealers	22,38,81,627	15,00,00,690	7,38,80,937	Maize
Kigumba S/C	Kigumba I	Kiryandongo District Extension Workers Association	33,16,68,750	22,22,18,063	10,94,50,688	Maize
Kyankende S/C	Kyankende	Kyankende Famers' Cooperative Limited	29,85,60,193	20,00,35,329	9,85,24,864	Maize
Mboira S/C	Apodorwa	Mboira United Farmers Cooperative Society Limited	22,39,65,000	15,00,56,550	7,39,08,450	Maize
Nyamahasa	Laboke	Nyamahasa United Area Cooperative Enterprise Limited	26,93,25,000	18,04,47,750	8,88,77,250	Maize

District: Hoima

Mparo		Ageteraine Farmers' Group	23,94,20,597	16,04,11,800	7,90,08,797	Maize
Buhanika		Buhanika Rice Farmers' Cooperative Society	29,85,07,462	20,00,00,000	9,85,07,462	Maize
Eastern Division		Hoima District Farmers' Cooperative Enterprise	28,44,26,961	19,05,66,064	9,38,60,897	Maize
Kyabigambire	Bulindi	Kikinda Farmers Group	22,38,80,597	15,00,00,000	7,38,80,597	Maize
Buseruka	Nyakabingo	Kwataniza Women Farmers Group	22,38,80,597	15,00,00,000	7,38,80,597	Maize

District: Masindi

Bwijanga		Bujenje Maize Farmers Cooperative Society	21,97,65,000	14,72,42,550	7,25,22,450	Coffee
Bwijanga		Bwijanga Coffee Farmers' Coopertaive Society	34,25,97,761	22,95,40,500	11,30,57,261	Maize
Labongo		Gukwatamanzi Cooperative Society	31,26,89,475	20,95,01,948	10,31,87,527	Maize
Central Division		Masindi District Farmers Association	24,83,25,000	16,63,77,750	8,19,47,250	Maize
Pakanyi	Kyakamese	Pakanyi Grain Dealers and Producers' Enterprise	29,85,07,461	19,99,99,999	9,85,07,462	Maize

CLUSTER 11

District: Ntungamo

Ngoma	Mukoni	Kashate Gamba Nokora Group	25,75,00,000	17,25,25,000	8,49,75,000	Beans
Rweikiro	Kitashekwa	Kitembe Farmers Group -LSB	10,09,71,000	6,76,50,570	3,33,20,430	Beans
Nyakerera	Kagorora	Nyakerera Rukoni Area Co-operative Ltd	35,94,51,900	24,08,32,773	11,86,19,127	Beans
Kafunjo	Sofia	Ruhaama Area Cooperative Enterprise Society Ltd	22,67,47,500	15,19,20,825	7,48,26,675	Beans

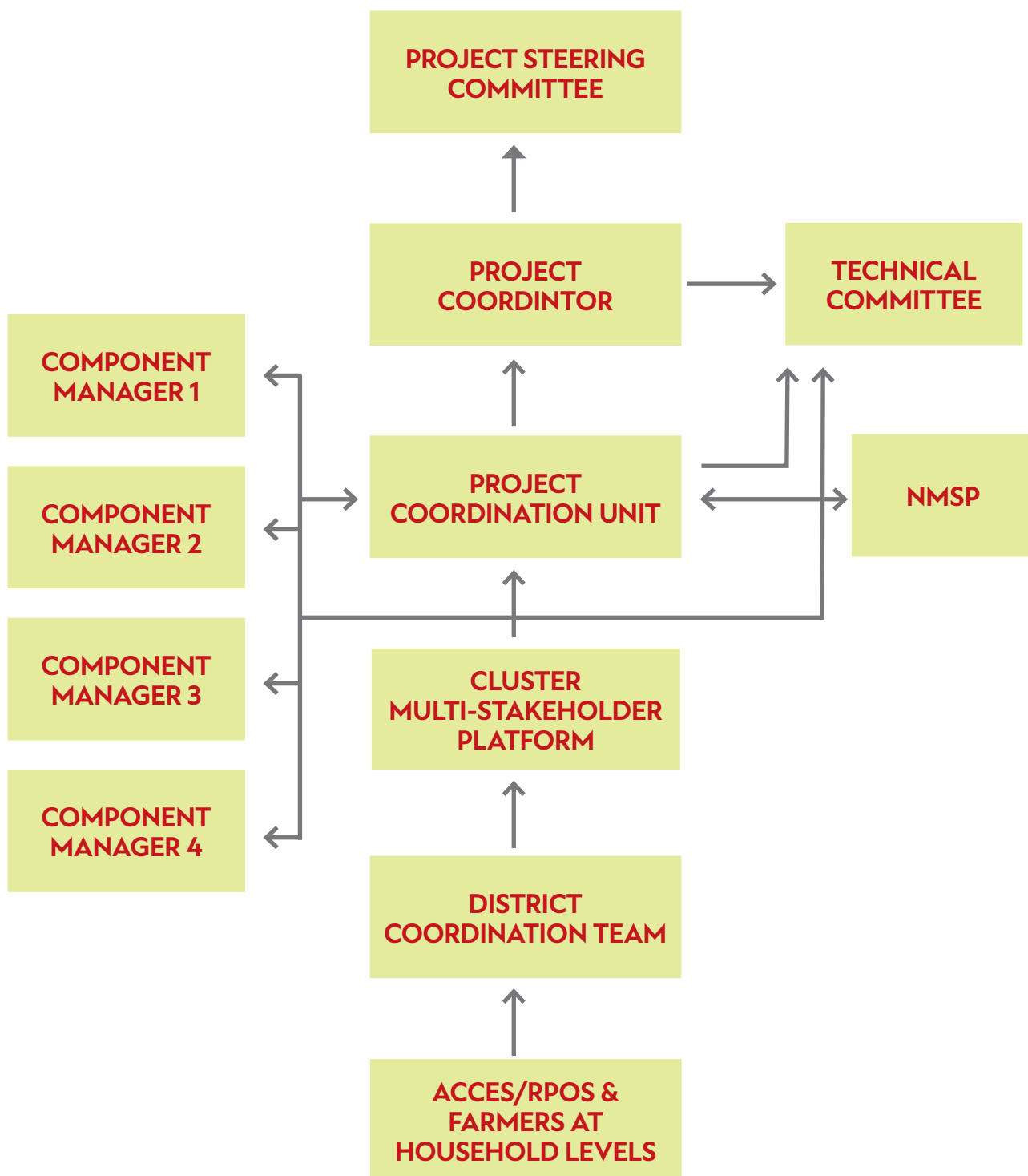
District: Bushenyi

Bitooma	Bitooma Ward	Bitooma Coffee Growers Cooperative Society Limited	41,00,00,000	27,47,00,000	13,53,00,000	Coffee
Kyeizooba	Buyanja	Buyanja tukole Cooperative Society Limited	40,29,85,074	27,00,00,000	13,29,85,074	Coffee
Nyabubare	Kahungye	Kachwamba Tukile Cooperative Society Limited	40,29,85,074	27,00,00,000	13,29,85,074	Coffee
Ruhumuro	Bugaara Parish	Kahungye Coffee Growers Association	27,98,25,000	18,74,82,750	9,23,42,250	Coffee
Kakanju	Kitojo	Kitojo Tumumanye Coffee Growers Cooperative Society	37,78,20,063	25,31,39,442	12,46,80,621	Coffee
Bumbaire	Kiyaga	Kiyaga Twegumye Cooperative Society Ltd	40,29,85,000	27,00,00,000	13,29,85,050	Coffee
Kyabugimbi & Ruhumuro	Rutooma, Rwembirizi, Bugaara & Nyamyerande	Nyakasharara Coffee Cooperative Society Limited	40,29,85,000	27,00,00,000	13,29,85,050	Coffee

Sub County	Parish	Grantee Name	Total Grant Amount (UGX)	MAAIF Award Ceiling	Grantee Cofinancing	Commodity supported
Ruhumuro	Nyibingo	Nyibingo Cooperative Society Ltd	41,60,10,000	27,87,26,700	13,72,83,300	Coffee
District: Isingiro						
Kaharo Ward	Isingiro T.C	Isingiro Bakara Gamba Nokora Ibagano Group Cooperative Savings & Credit Society	17,30,72,813	11,59,58,785	5,71,14,028	Beans
Kyamusoni	Ruborogota	Isingiro District Farmers Association Kyamusoni Branch	11,37,99,000	7,62,45,330	3,75,53,670	Beans
Kigarama	Kabuyanda	Kigarama Commodity Marketing Cooperative Society	13,54,50,000	9,07,51,500	4,46,98,500	Beans
Kigyendwa	Nyamuyanja	Kigyendwa Bakara Kwetungura Group	7,63,60,000	5,11,61,200	2,51,98,800	Beans
Kyezimbire	Kikagate	Kyezimbire Catholic Women Organization	33,16,36,200	22,21,96,254	10,94,39,946	Beans
Kihanda	Mbaare	Mishenyi Twimukye Group	7,63,60,000	5,11,61,200	2,51,98,800	Beans
Ntungu	Nyakitunda	Ntungu Coffee Growers Cooperative Society	20,16,00,000	13,50,72,000	6,65,28,000	Coffee
Ruhiira	Nyakitunda	Omutama GwaRuhira Cooperative Society Ltd	22,02,99,860	14,76,00,906	7,26,98,954	Beans
Rukuuba	Masha	Rukuuba Farmers' Cooperative Limited	25,90,00,000	17,35,30,000	8,54,70,000	Beans
District: Rubanda						
Bubare	Bubare	Bubaare Innovation Platform Multipurpose Society Limited	35,64,75,000	23,88,38,250	11,76,36,750	Beans
Bufundi	Kishanje	Bufundi Development Association	33,57,90,000	22,49,79,300	11,08,10,700	Beans
Ikumba	Mushanje	Mushanje Bee Keepers	30,60,00,000	20,50,20,000	10,09,80,000	Beans
District: Rukiga						
Kamwezi	Kashekye	Kamwezi Prime Wine Producers	37,67,19,000	25,24,01,730	12,43,17,270	Beans
Bukinda	Nyakasiru	Karubanda Tukorere Hamwe	34,55,30,528	23,15,05,454	11,40,25,074	Beans
District: Kabale						
Buhara	Kafunjo	Karweru Bahingi Kweterana Group	37,60,50,000	25,19,53,500	12,40,96,500	Beans
Rubaya	Buramba	Rwemihanga Organic Wine making group	19,53,00,000	13,08,51,000	6,44,49,000	Beans
District: Bushenyi						
Karira	Bitooma	Baana Tukwatanise Group	40,55,00,000	27,16,85,000	13,38,15,000	Beans
Ishaka	Town Ward	Ishaka Western Coffee Traders Cooperative Society	41,50,00,000	27,80,50,000	13,69,50,000	Coffee
Kyabugimbi	kyeigombe	Kabura Kwekuzza Coffee Growers Cooperative Society	41,10,00,000	27,53,70,000	13,56,30,000	Coffee
Bumbaire	Kiyanga	Kantunda Bean Farmer's Association	41,50,50,000	27,80,83,500	13,69,66,500	Beans
Nyabubare	Kanyegero	Nkanga Tuhurukire Growers Cooperative	41,61,75,000	27,88,37,250	13,73,37,750	Coffee
Bumbaire	Numba	Numba Miremebe Growers Cooperative Society Limited	41,40,00,000	27,73,80,000	13,66,20,000	Coffee
Kizinda Kigoma	Kizinda Ward	Nyabubare Area Cooperative Enterprise Limited	41,00,00,000	27,47,00,000	13,53,00,000	Coffee
Bitooma	Nanga	Nyanga Twetarane Coffee Growers Cooperative	41,50,00,000	27,80,50,000	13,69,50,000	Coffee
Kyabugimbi	Kitwe	Runyinga Growers Cooperative	41,65,00,000	27,90,55,000	13,74,45,000	Coffee
Bitooma	Nyanga	Rwengwe Farmers Group	40,80,00,000	27,33,60,000	13,46,40,000	Coffee
District: Isingiro						
		Abarihamwe Omubuhingi Noburisa Association	26,35,50,000	17,65,78,500	8,69,71,500	Beans
		Rwezirigiro United Farmers Group	25,79,70,895	17,28,40,500	8,51,30,395	Beans
		Rwenanura Twebiseho Development Association	24,67,50,000	16,53,22,500	8,14,27,500	Beans
District: Kabale						
Maziba	Kahondo	Kabale Speciality Arabica Coffee Growers Association Limited	42,35,17,500	28,37,56,725	13,97,60,775	Coffee
Kahoro	Kitohwa	Kitohwa Tuhingye Emondi Group	22,41,22,500	15,01,62,075	7,39,60,425	Beans
Kitumba	Kitumba	Reign Business Development Agency	38,30,40,000	25,66,36,800	12,64,03,200	Beans
District: Ntungamo						
Central Division	Kikoni	Abateganda Ntungamo growers Coop Society	22,33,20,896	14,96,25,000	7,36,95,896	Coffee

Sub County	Parish	Grantee Name	Total Grant Amount (UGX)	MAAIF Award Ceiling	Grantee Cofinancing	Commodity supported
Nyamunuka TC	Kakika	Nkuzi Coffee Farmers Association	41,69,15,100	27,93,33,117	13,75,81,983	Coffee
Ntungamo	Kahunga	Ntungamo Coffee Farmers Coop Society limited	36,92,70,895	24,74,11,500	12,18,59,395	Coffee
District: Rubanda						
Ikumba	Kashasha	Mukatoma Local Bean	17,88,15,000	11,98,06,050	5,90,08,950	Beans
Ikumba	Kashasha	Ndego Trading Centre Baryakamwe Group	17,88,15,000	11,98,06,050	5,90,08,950	Beans
Hamurwa	Karukara	Rwara Bataka Kweyamba	17,88,15,000	11,98,06,050	5,90,08,950	Beans
District: Rukiga						
Bukinda	Nyakasiru	Green Farm Farmers Association	39,15,45,000	26,23,35,150	12,92,09,850	Beans
Kamwezi	Kyabuhangwa	Kashekye-kyabuhangwa Batungi Tukwatanise	26,25,00,000	17,58,75,000	8,66,25,000	Beans
Lwamucucu	Noози	Noози Tukore Group	21,00,00,000	14,07,00,000	6,93,00,000	Beans
CLUSTER 12						
District: Yumbe						
Drajini	Naku, Yaa	Ababo Agricultural Women Farmers Association	21,47,25,000	14,38,65,750	7,08,59,250	Cassava
Drajini	Arudaku	Aliamu Cupiria Timbakua Seed Development Association	38,65,67,164	25,90,00,000	12,75,67,164	Cassava
Midigo	Medennga	Binagoro Women Group	18,90,00,000	12,66,30,000	6,23,70,000	Cassava
District: Pakwach						
Alwi	Nyabang	Abongo Womens Group	37,24,75,475	24,95,58,568	12,29,16,907	Cassava
Panyango	Pamitu	Pamitu Cassava Growers Cooperative Society Limited	36,11,87,466	24,19,95,602	11,91,91,864	Cassava
Panyango	Pokwero	Pokwero Cassava Producers Cooperative Society Limited	34,63,68,152	23,20,66,662	11,43,01,490	Cassava
District: Maracha						
Kijomoro	Drianzipi	Kijomoro Amanya ondisi Farmers' Cooperative Society Ltd	41,37,90,827	27,72,39,854	13,65,50,973	Cassava
Yivu	Ombia	Yivu Subcounty Veterans Association	41,49,25,373	27,80,00,000	13,69,25,373	Cassava
District: Nebbi						
Kucwiny	Vurr	Aratarach Farmers' Cooperative	41,80,00,000	28,00,60,000	13,79,40,000	Cassava
Nebbi	Kochi	Kud I OI Farmers and Saving Association	25,91,88,085	17,36,56,017	8,55,32,068	Cassava
Nebbi	Patek Pakucur	MerBer "A" Cooperative Society Limited	40,68,71,000	27,26,03,570	13,42,67,430	Cassava
Parombo	Parwo	Parombo Multi-stakeholders Innovation Platform(PAMSIP)	39,09,59,805	26,19,43,069	12,90,16,736	Cassava
Parombo	Penji Oryang	Yesu Dit Farmers' Cooperative Society Limited	38,91,39,805	26,07,23,669	12,84,16,136	Cassava
District: Arua						
Okavu	Logiri	Amika United Market Venders SACCO	41,37,90,827	27,72,39,854	13,65,50,973	Coffee
G/Atuni	Rhinio Camp	MA-Ecora Oil seed Development Cooperative	41,49,25,373	27,80,00,000	13,69,25,373	Coffee
Logiri	Anyavu	Grain Trade and Development	41,23,18,655	27,62,53,499	13,60,65,156	Cassava
Logiri	Lazebu	Ojimbuni Community Effort For Development	36,36,27,000	24,36,30,090	11,99,96,910	Cassava
District: Yumbe						
Drajini	Romogi	Bidi Bidi High Level Farmers' Association	41,14,00,000	27,56,38,000	13,57,62,000	Cassava
Odravu	Lui	Community Development Foundation Farmers' Group	41,00,00,000	27,47,00,000	13,53,00,000	Cassava
Apo	Kerila	Idokibo Mixed Profira Farmers' Group	41,00,00,000	27,47,00,000	13,53,00,000	Cassava
Romogi	Locomgbo	Imbashi Community Farmers' Association	38,52,40,000	25,81,10,800	12,71,29,200	Cassava
Apo	Yetaa	Nachalua United Farmers' Group	40,01,00,000	26,80,67,000	13,20,33,000	Cassava
Apo	Najere	Najere Farmers Group	37,71,00,000	25,26,57,000	12,44,43,000	Cassava
District: Maracha						
Nyadri	Pabura	Maracha District Farmers Association	33,07,32,381	22,15,90,695	10,91,41,686	Cassava

INSTITUTIONAL ARRANGEMENTS FOR ACDP COORDINATION & IMPLEMENTATION



CUMULATIVE PROJECT FINANCIAL PERFORMANCE AS PER SUBCOMPONENTS, AS AT 30TH /04/2021

SUB-COMPONENTS	OVERALL BUDGET	CUMULATIVE EXPENDITURE	VARIANCE	PERFORMANCE
E-Voucher Program	57,242,355	23,557,501	33,684,854	41%
Training for Recipients of e-Voucher Support	12,780,374	10,218,065	2,562,309	80%
Development of Agricultural Input Markets	1,123,371	377,181	746,190	34%
Capacity Building for Producer Organizations and other Value Chain Actors	2,570,832	1,919,308	651,524	75%
ACCE-level warehousing, value addition, and marketing (Producer Organizations)	27,200,000	14,026,451	13,173,549	52%
Farm Access Roads and Choke Points at Community Level	18,757,274	3,998,881	14,758,393	21%
Policy, Regulatory and Institutional Support	3,053,340	1,461,779	1,591,561	48%
Agricultural Water Management Investments	6,167,899	2,393,620	3,774,279	39%
Agricultural Statistics	4,496,846	1,830,057	2,666,789	41%
Management of Fall Army Worm	1,300,000	796,226	503,774	61%
National, Cluster and District Coordination	6,443,158	3,629,223	2,813,935	56%
Monitoring and Evaluation and Impact Evaluation	4,000,000	2,335,762	1,664,238	58%
Web-based, Geo-tagged ICT Platforms	4,864,551	2,193,445	2,671,106	45%
Overall Total	150,000,000	68,737,501	81,262,499	46%



ACDP
Agriculture Cluster Development Project



WORLD BANK

AGRICULTURE CLUSTER DEVELOPMENT PROJECT

Ministry of Agriculture, Animal Industry and Fisheries
Plot 14-18, Lugard Avenue
P O Box 101, Entebbe - Uganda

Toll free No. 0800203900
website www.agriculture.go.ug
email acdpcu@agriculture.go.ug
Twitter @UgAcdp @MAAIF_Uganda
Blog <https://ugacdpc.blogspot.com>